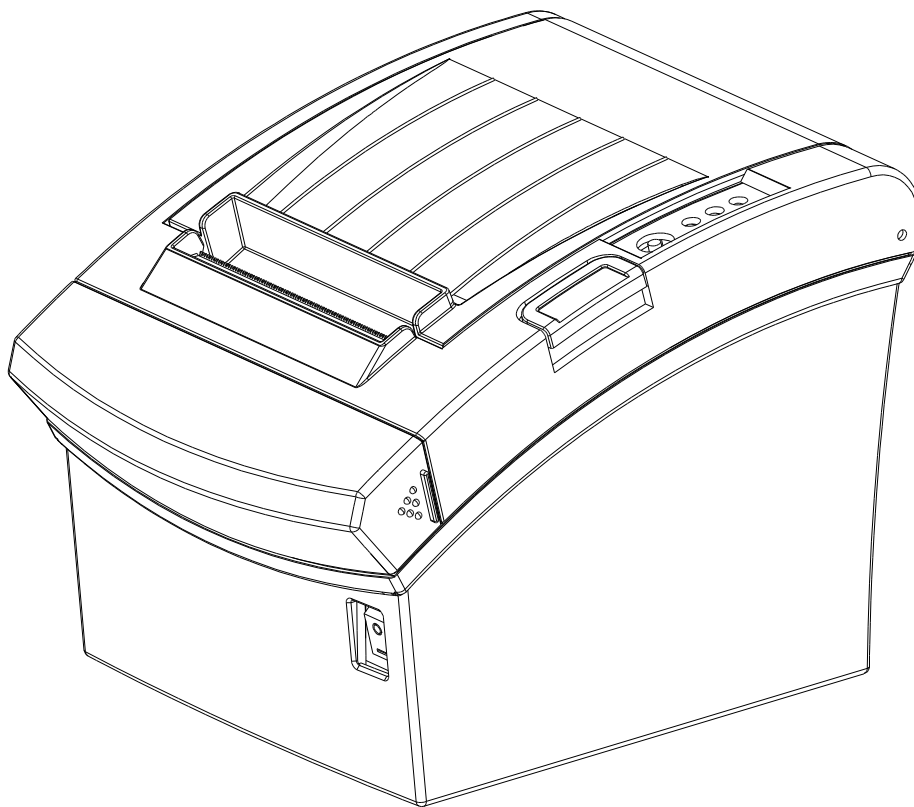


BIXOLON®

Windows Driver Manual
SRP-352plusII

Thermal printer
Rev. 1.01



<http://www.bixolon.com>

■ Table of Contents

1. About this Manual	3
2. OS Environment	3
3. Windows Driver Preparation	3
4. Windows Driver Installation	4
4-1 Installing on Windows XP / Server 2003	4
4-1-1 Via Serial Port or Bluetooth	4
4-1-2 Via Parallel Port.....	7
4-1-3 Via USB Port	9
4-1-4 Via Ethernet / Wireless LAN Port.....	11
4-2 Installing on Windows VISTA / Server 2008 / 7 / 8	14
4-2-1 Via Serial or Bluetooth.....	14
4-2-2 Via Parallel Port.....	17
4-2-3 Via USB Port	19
4-2-4 Via Ethernet / Wireless LAN Port.....	21
5. Detailed settings of Windows driver	24
5-1 Layout.....	24
5-1-1 Number of Prints	24
5-1-2 Paper Type.....	24
5-1-3 Paper Size	25
5-1-4 Image Rotation.....	26
5-1-5 Paper Reduction	26
5-1-6 Crop Function.....	26
5-2 Dithering.....	27
5-3 NV Image/Commands	28
5-4 Barcodes	29
5-4-1 1d Barcodes.....	29
5-4-2 2d Barcodes.....	31
5-5 Cut / Cash Drawer	32
5-6 Utilities.....	33
5-6-1 Unified POS Utility.....	33
5-6-2 Special Font Edit Utility.....	34
5-6-3 Journal Viewer	35
5-6-4 Text Macro.....	36
5-6-5 Image Macro	37
6. Windows Driver Specifications	41
6-1 Fonts	41
6-1-1 Standard Fonts.....	41
6-1-2 Meaning of names of Device fonts.	42
6-2 "FontControl" Font	43
7. Windows Driver Application	45
7-1 Application with Visual Basic.....	45
7-1-1 Windows driver selection.....	45
7-1-2 Text Printing	45
7-1-3 Barcode Printing.....	46
7-2 Application with WordPad	47
7-2-1 WordPad environment setting	47
7-2-2 Text Printing	47

1. About this Manual

This Windows Driver Installation Manual provides information on installation, detailed specifications, and usage of the printer's Windows Driver according to PC operating system (OS).

We at BIXOLON maintain ongoing efforts to enhance and upgrade the functions and quality of all our products. In following, product specifications and/or user manual content may be changed without prior notice.

2. OS Environment

The following operating systems are supported by this Windows driver.

- Microsoft Windows XP (32bit/64bit)
- Microsoft Windows Server 2003 (32bit/64bit)
- Microsoft Windows Vista (32bit/64bit)
- Microsoft Windows Server 2008 (32bit/64bit)
- Microsoft Windows Server 2008R2 (64bit)
- Microsoft Windows 7 (32bit/64bit)
- Microsoft Windows 8 (32bit/64bit)

3. Windows Driver Preparation

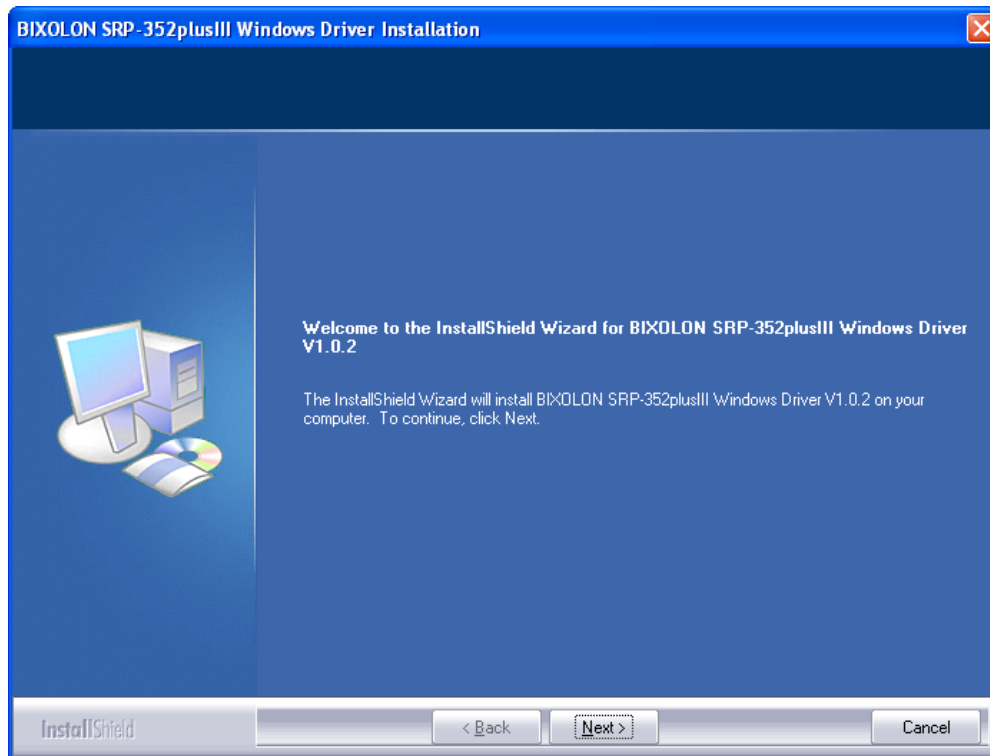
The Windows Driver is included in the enclosed CD, and Latest file versions can be downloaded from the Bixelon website. (www.bixelon.com)

4. Windows Driver Installation

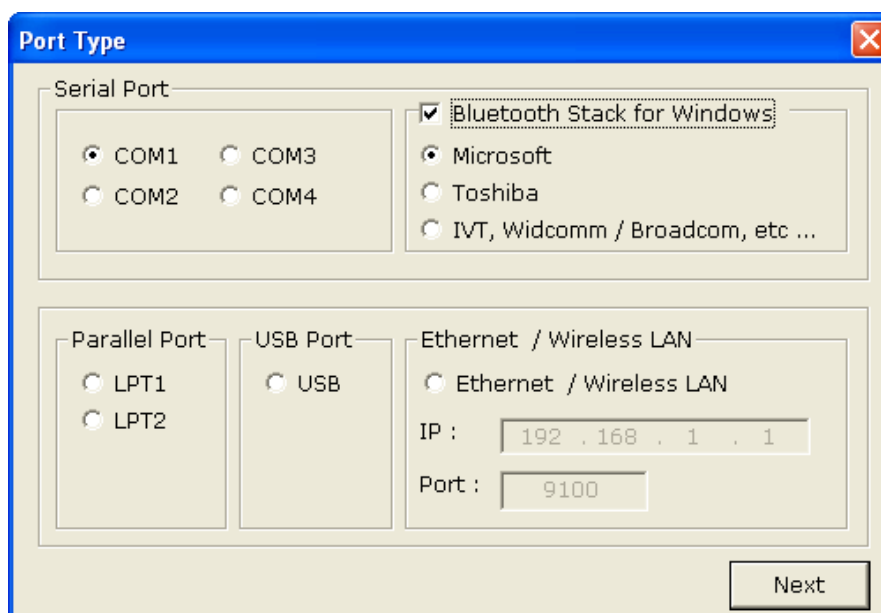
4-1 Installing on Windows XP / Server 2003

4-1-1 Via Serial Port or Bluetooth

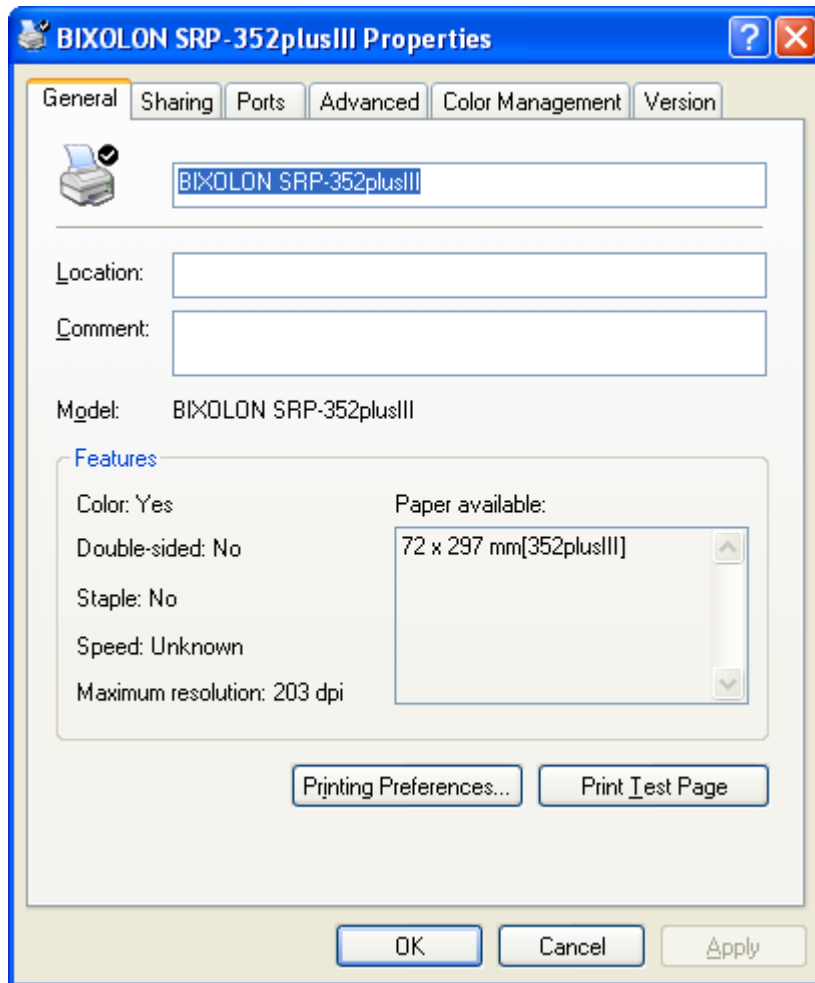
- 1) Double-click the Windows Driver installation file.
- 2) Click "Next".



- 3) Select a COM port number to be used.

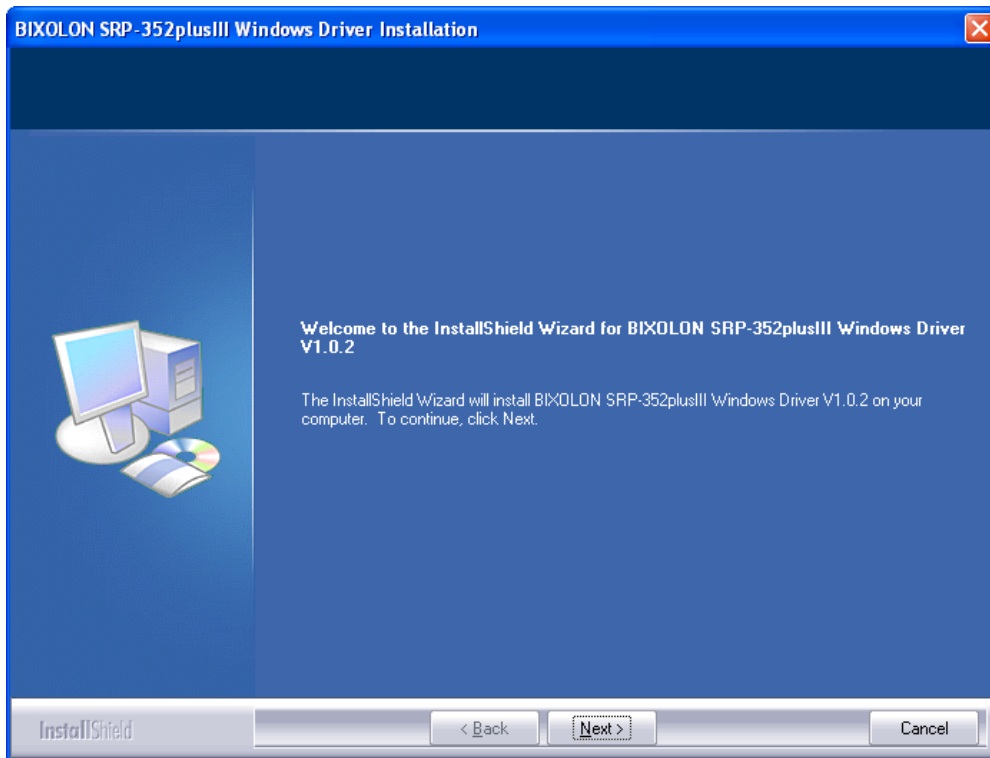


- 10) Click “Print Test Page” and check printing status. Proper installation of the driver is indicated if the test page is printed normally.

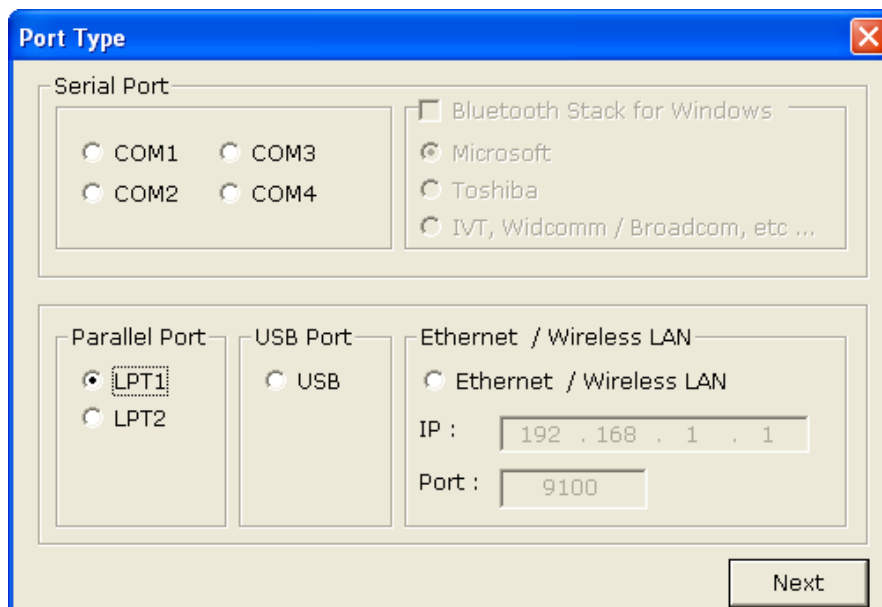


4-1-2 Via Parallel Port

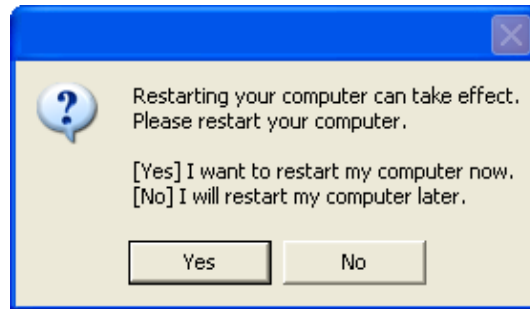
- 1) Double-click the Windows Driver installation file.
- 2) Click “Next”.



- 3) Select a LPT port to be used and click “Next”.



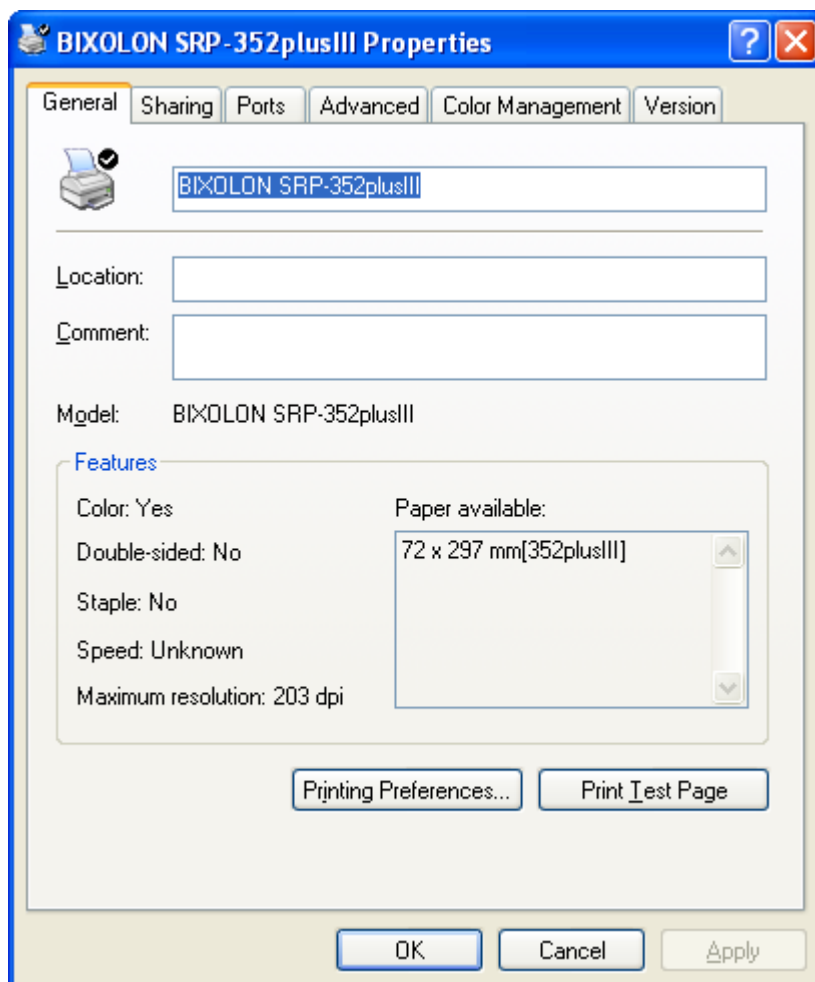
4) Click “Yes” to reboot the PC.



5) Open the printer properties window in the Windows OS.

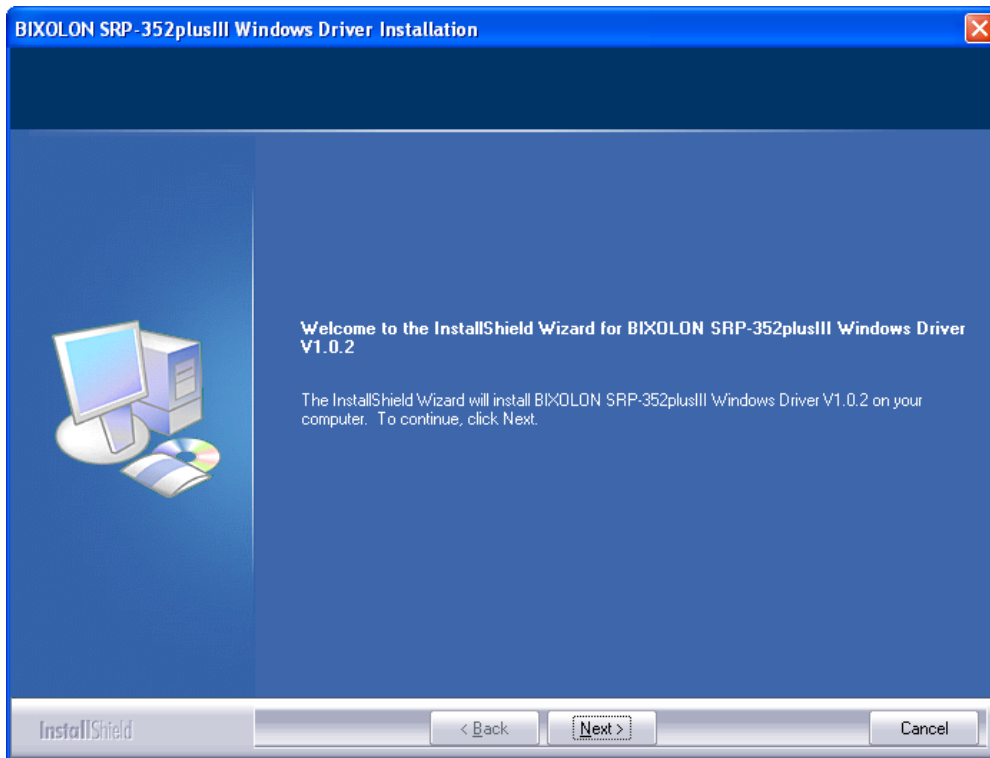
※ Control Panel – Printers and Faxes.

6) Click “Print Test Page” and check printing status. Proper installation of the driver is indicated if the test page is printed normally.

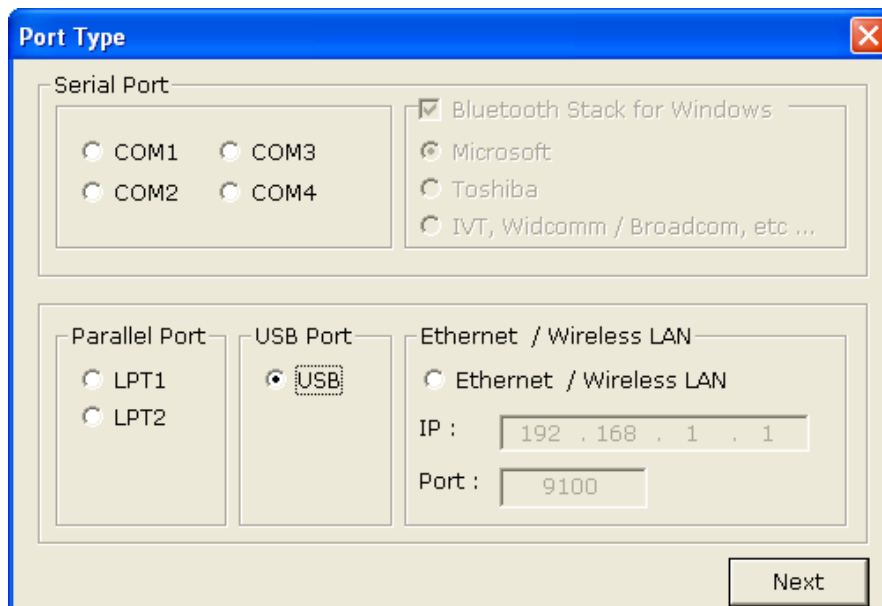


4-1-3 Via USB Port

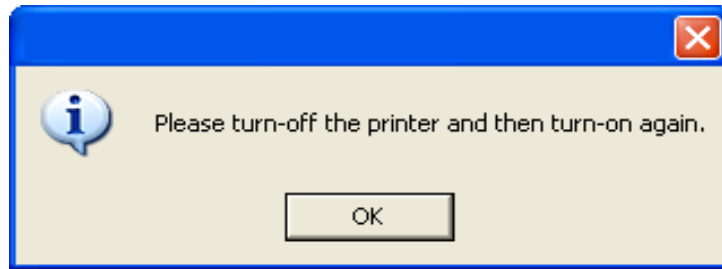
- 1) Double-click the Windows Driver installation file.
- 2) Click “Next”.



- 3) Select USB and click “Next”.



4) Click "OK".

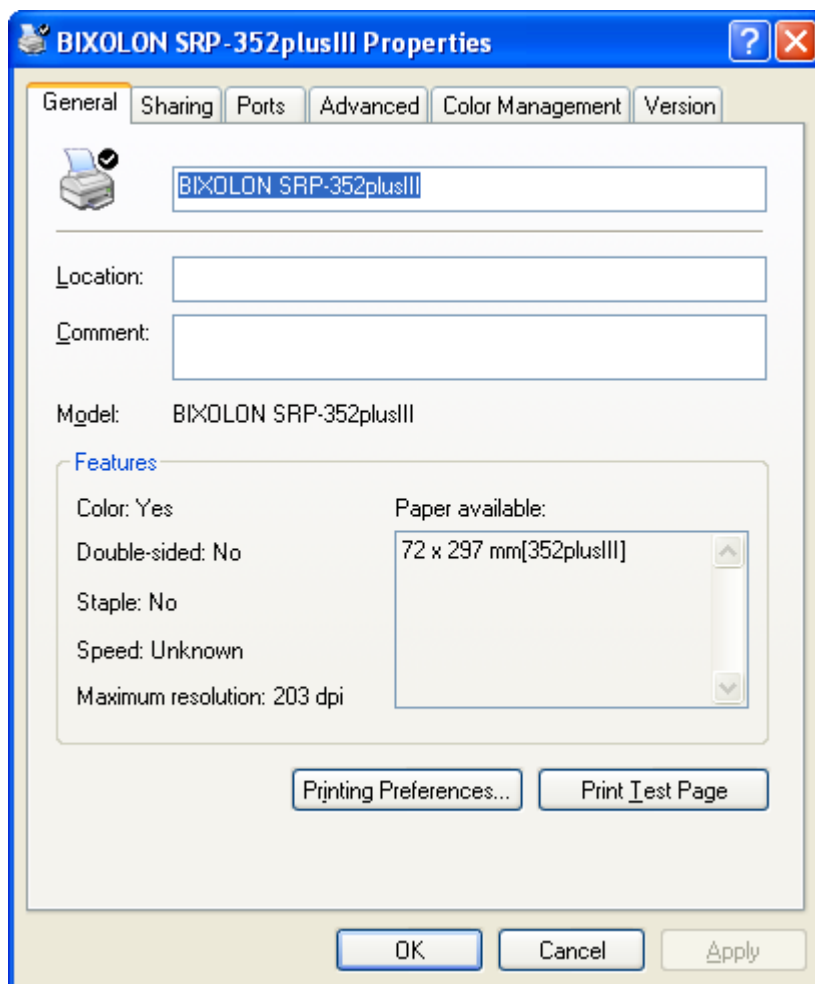


5) Turn off the printer and then turn it on. The printer driver will be installed automatically.

6) Open the printer properties window in the Windows OS.

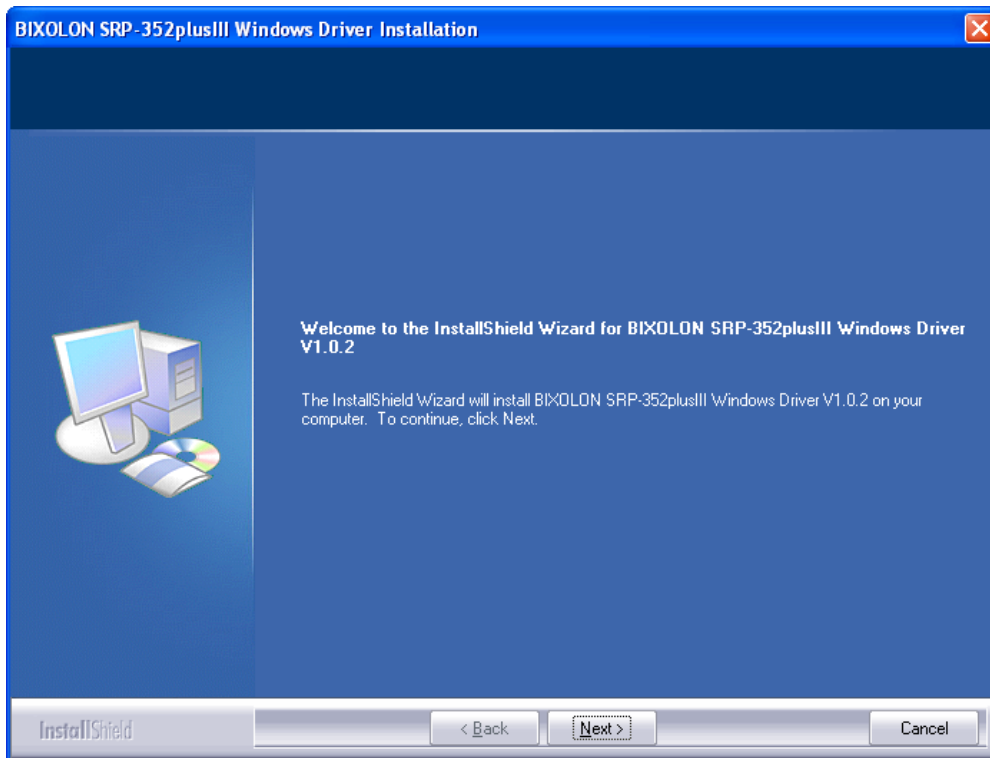
※ Control Panel – Printers and Faxes.

7) Click "Print Test Page" and check printing status. Proper installation of the driver is indicated if the test page is printed normally.

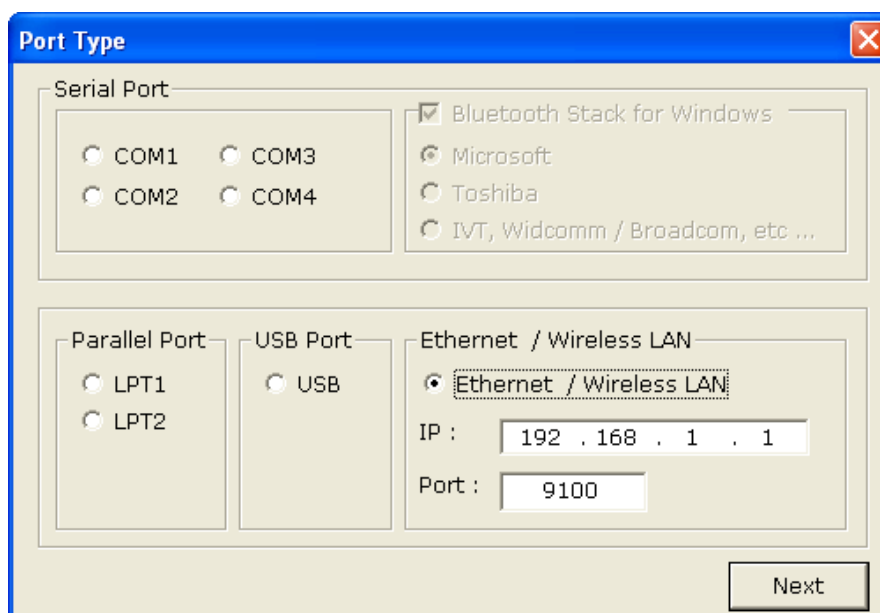


4-1-4 Via Ethernet / Wireless LAN Port

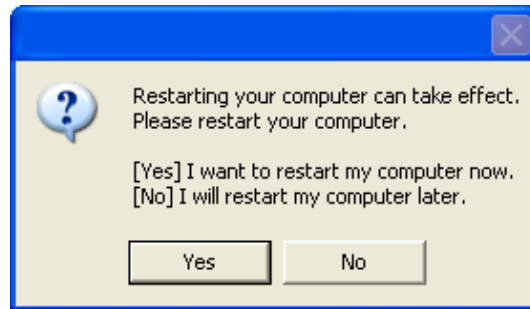
- 1) Double-click the Windows Driver installation file.
- 2) Click “Next”.



- 3) Select “Ethernet / Wireless LAN”.
- 4) Enter the IP address and port number, and then click “Next”.



5) Click “Yes” to reboot the PC.

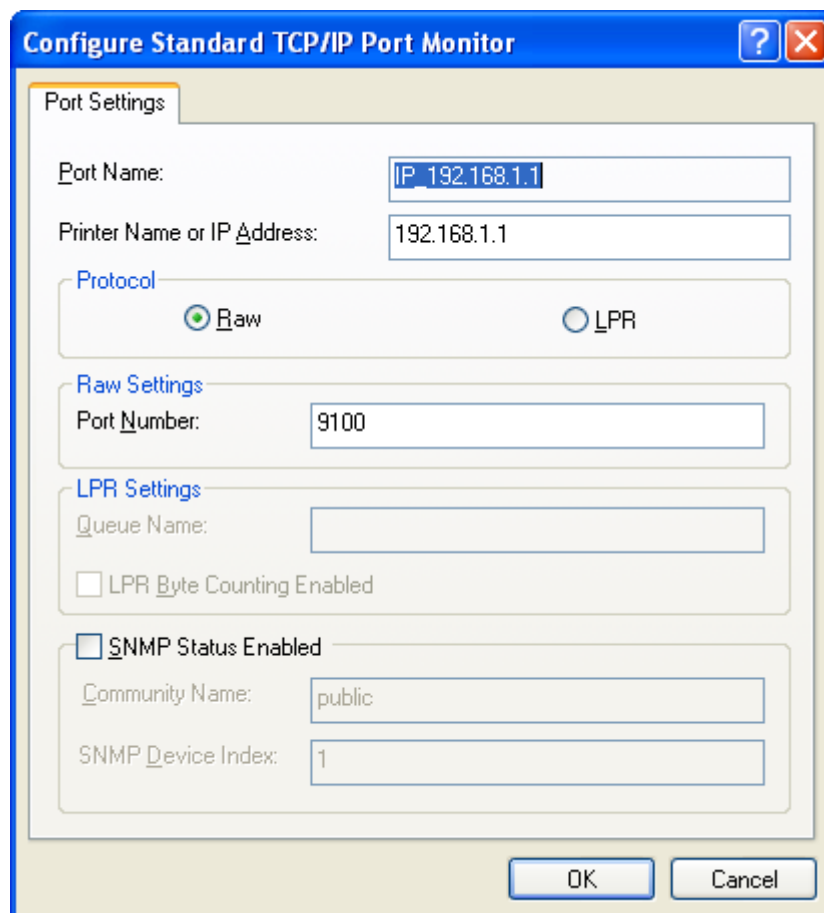


6) Open the printer properties window in the Windows OS.

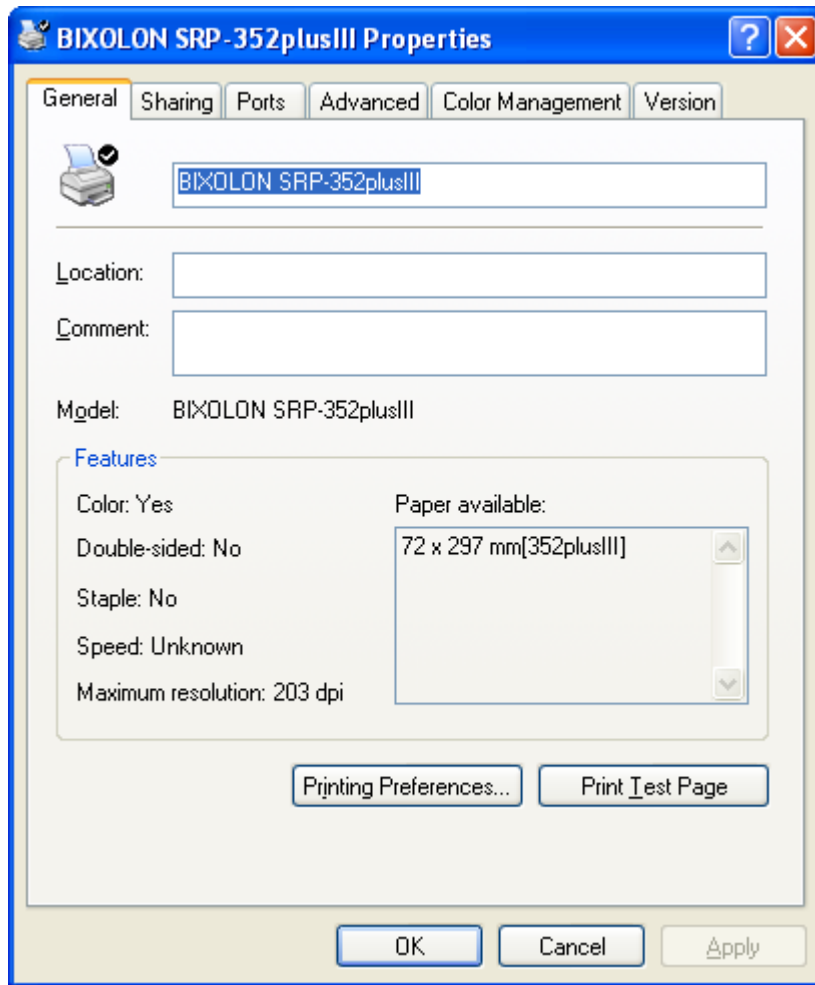
※ Control Panel – Printers and Faxes.

7) In the Ports tab, click “Configure Port...”

8) Match the communication settings to those of the printer.



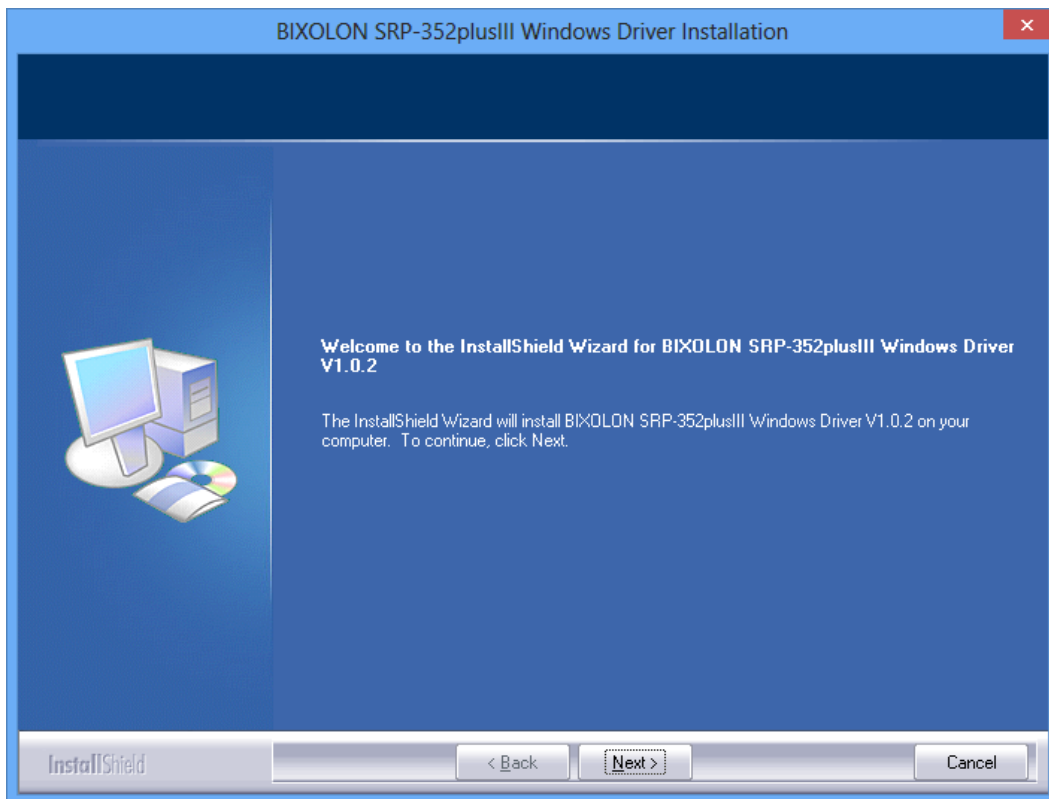
9) Click “Print Test Page” and check printing status. Proper installation of the driver is indicated if the test page is printed normally.



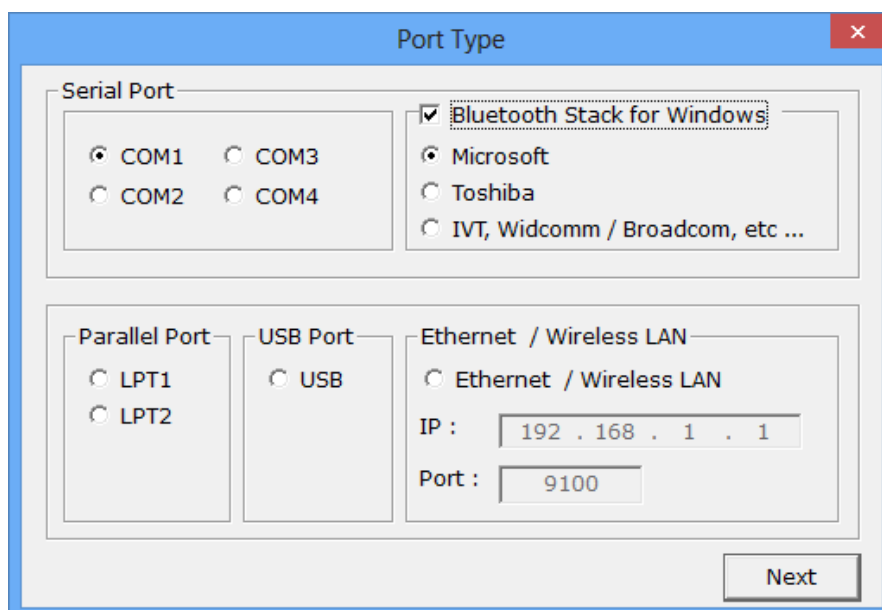
4-2 Installing on Windows VISTA / Server 2008 / 7 / 8

4-2-1 Via Serial or Bluetooth

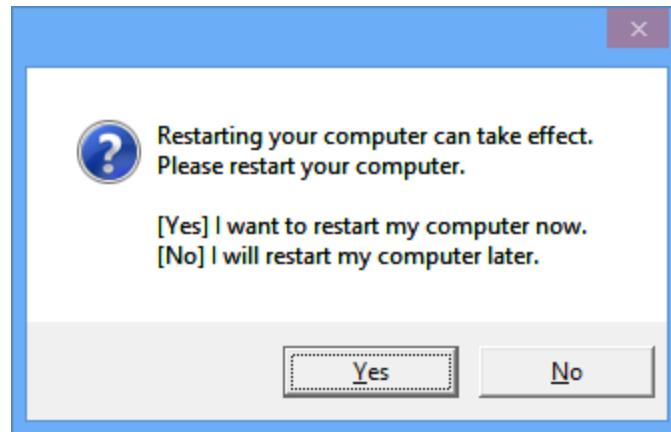
- 1) Double-click the Windows Driver installation file.
- 2) Click “Next”.



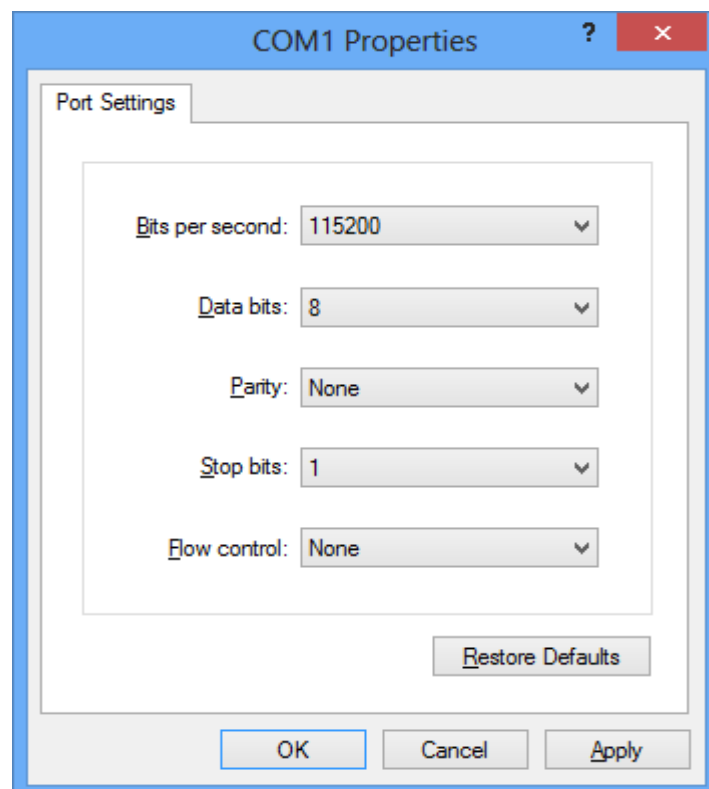
- 3) Select a COM port number to be used.



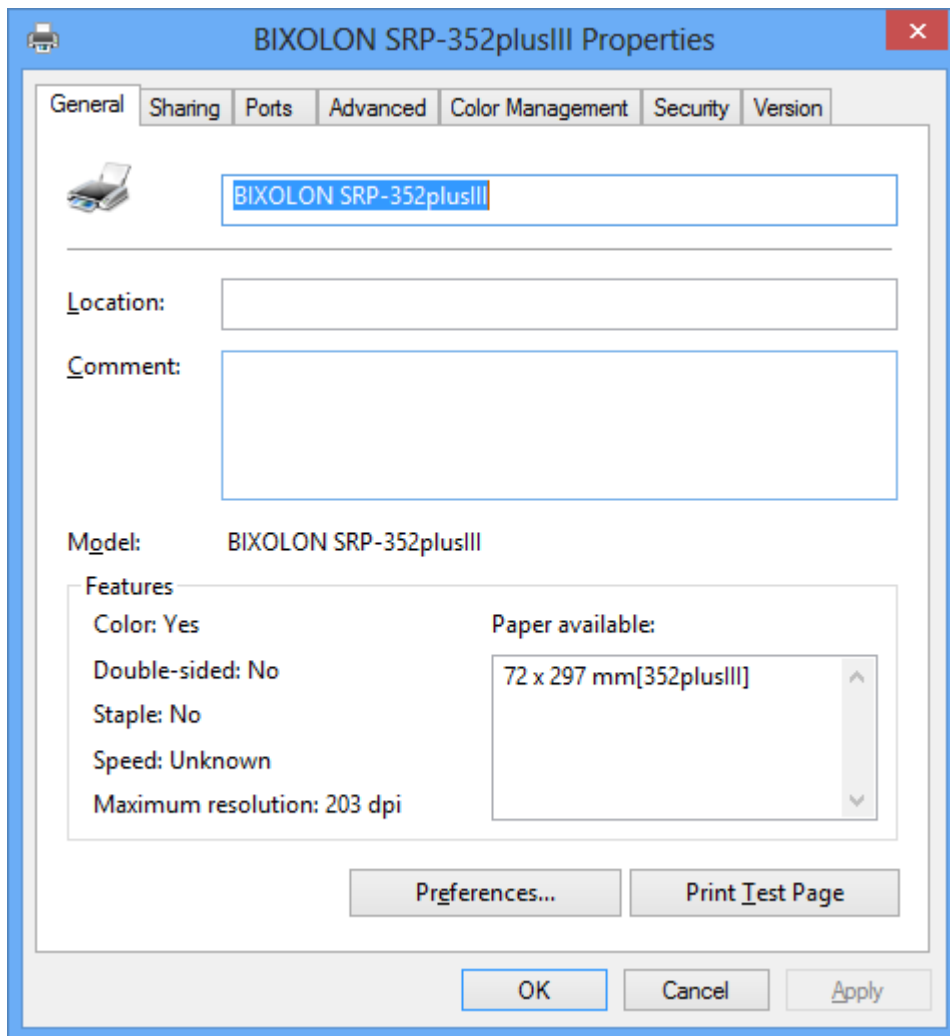
- 4) If you are using a Bluetooth Serial port, click “Bluetooth Stack for Windows” and then select a Bluetooth driver vendor.
※ Pass this step if the printer is connected with a serial cable.
- 5) Click “Next” to install Windows driver.
- 6) Click “Yes” to reboot the PC.



- 7) Open the printer properties window in the Windows OS.
※ Control Panel – Hardware and Sound – Device and Printers.
- 8) In the “Ports” tab, click “Configure Port...”
※ Pass this step if you are using a Bluetooth Serial port.
- 9) Match the communication settings to those of the printer. The communication settings of the printer can be performed by conducting a self-test.
※ Pass this step if you are using a Bluetooth Serial port.

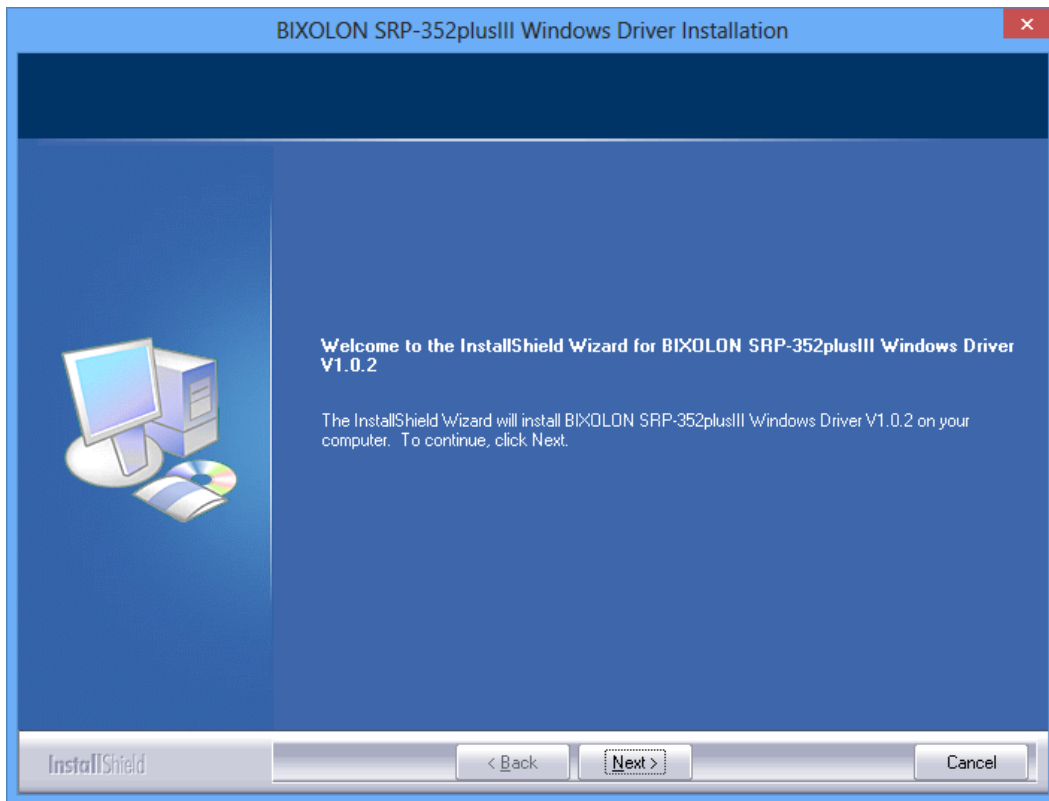


- 10) Click the “Print Test Page” button and check printing status. Proper installation of the driver is indicated if the test page is printed normally.

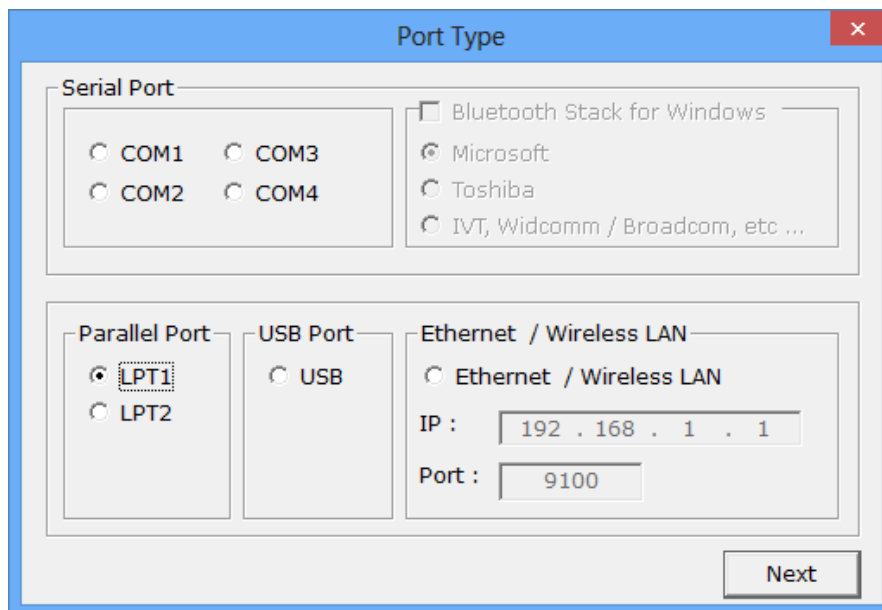


4-2-2 Via Parallel Port

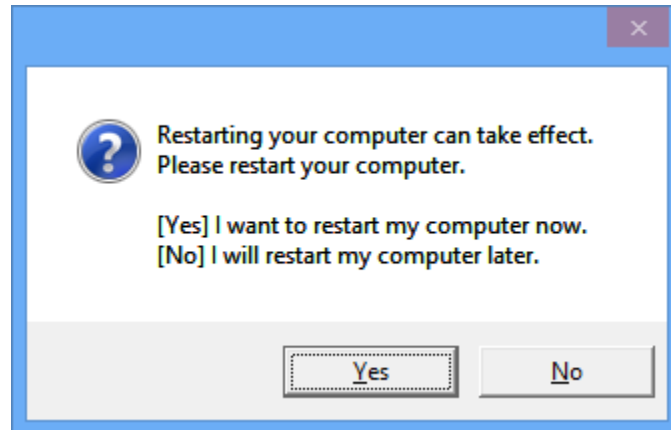
- 1) Double-click the Windows Driver installation file.
- 2) Click “Next”.



- 3) Select a LPT port number to be used and click “Next”.



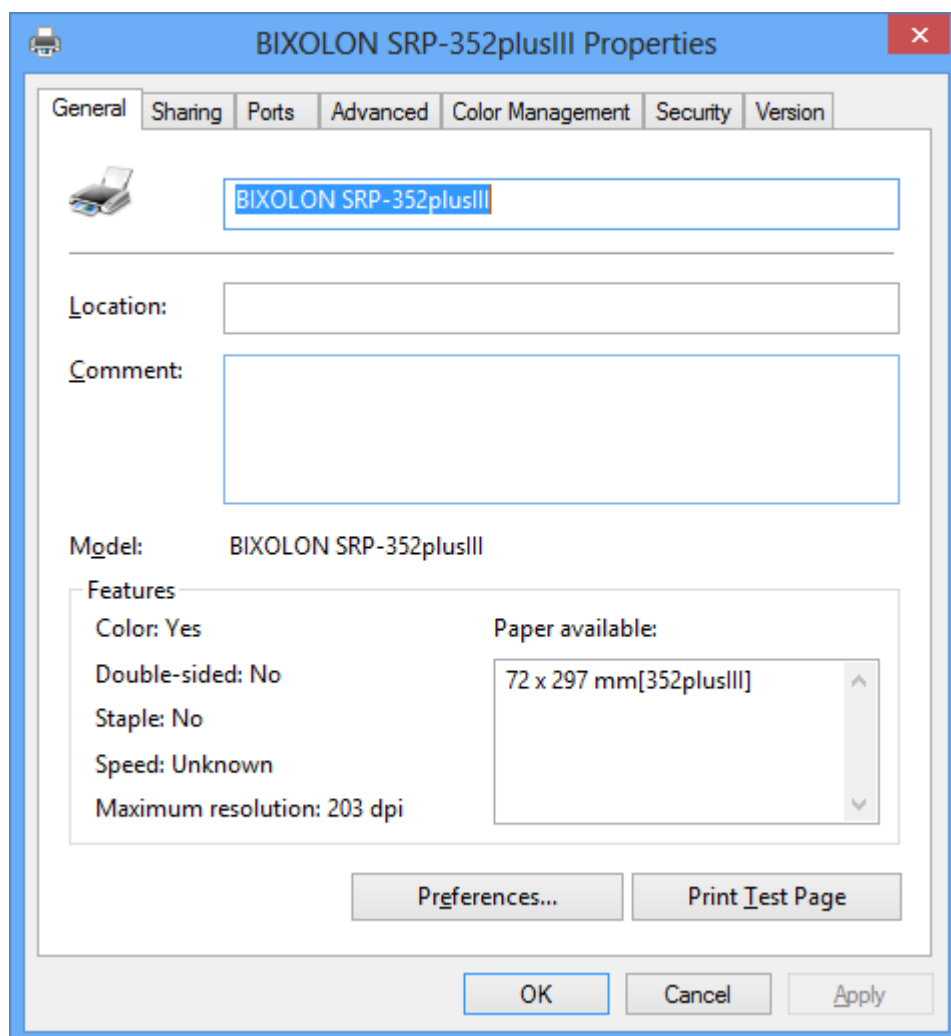
4) Click “Yes” to reboot the PC.



5) Open the printer properties window in the Windows OS.

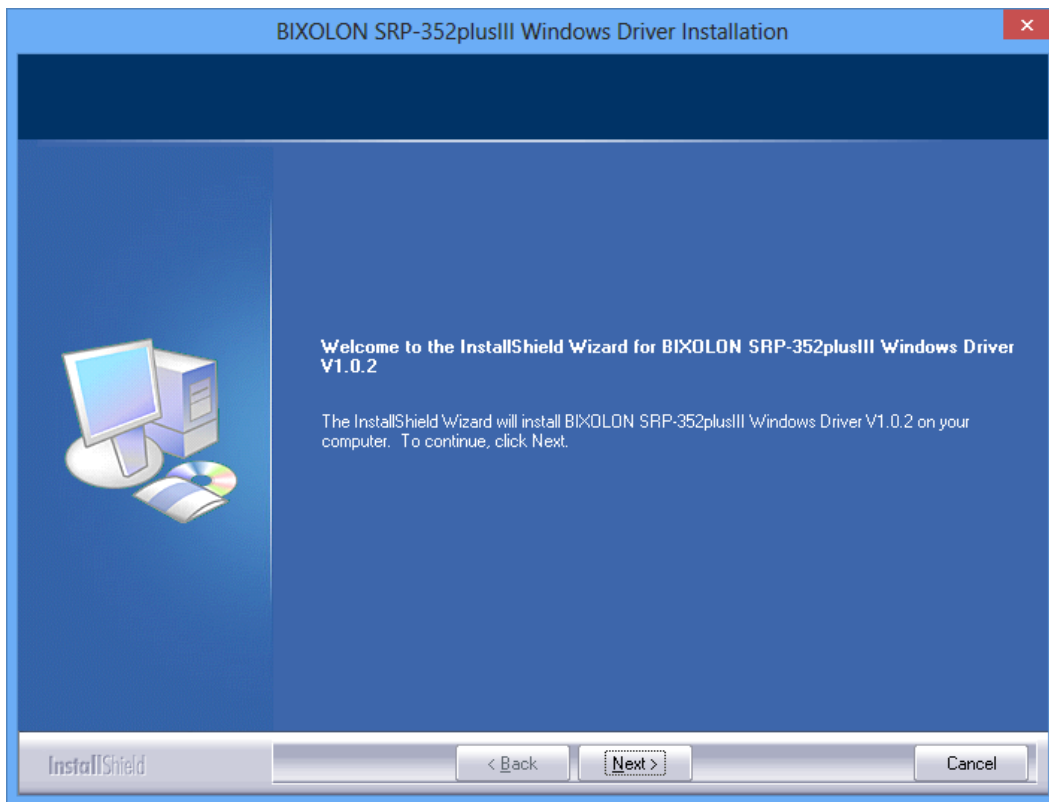
※ Control Panel – Hardware and Sound – Device and Printers.

6) Click “Print Test Page” and check printing status. Proper installation of the driver is indicated if the test page is printed normally.

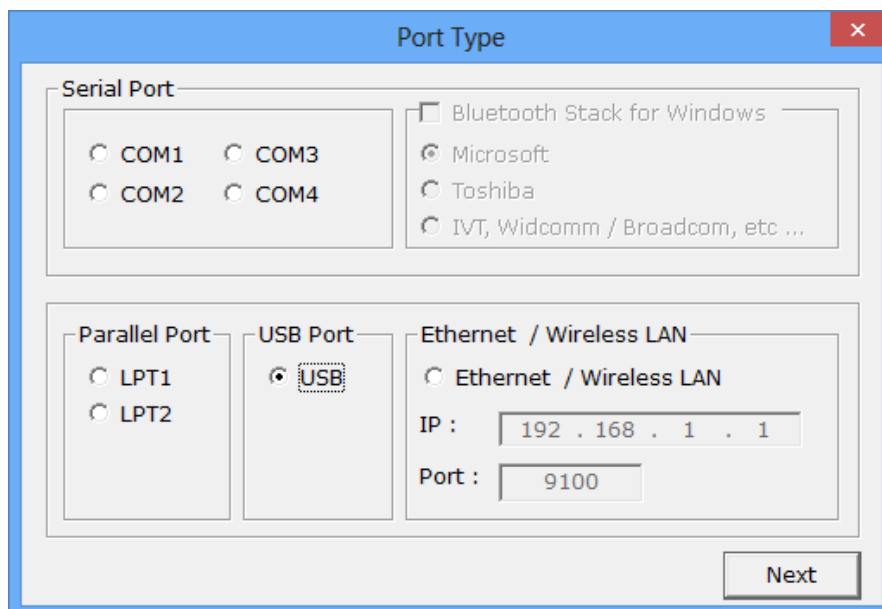


4-2-3 Via USB Port

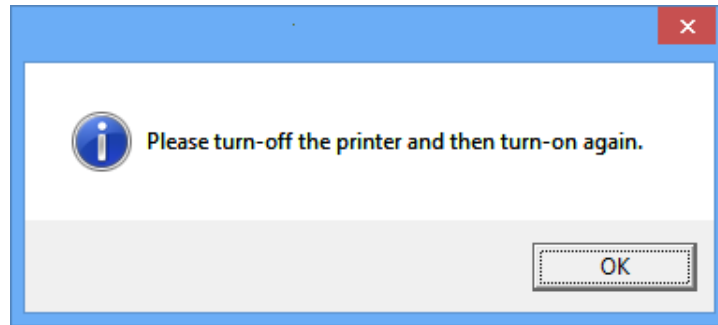
- 1) Double-click the Windows Driver installation file.
- 2) Click “Next”.



- 3) Select USB and click “Next”.



4) Click “OK”.

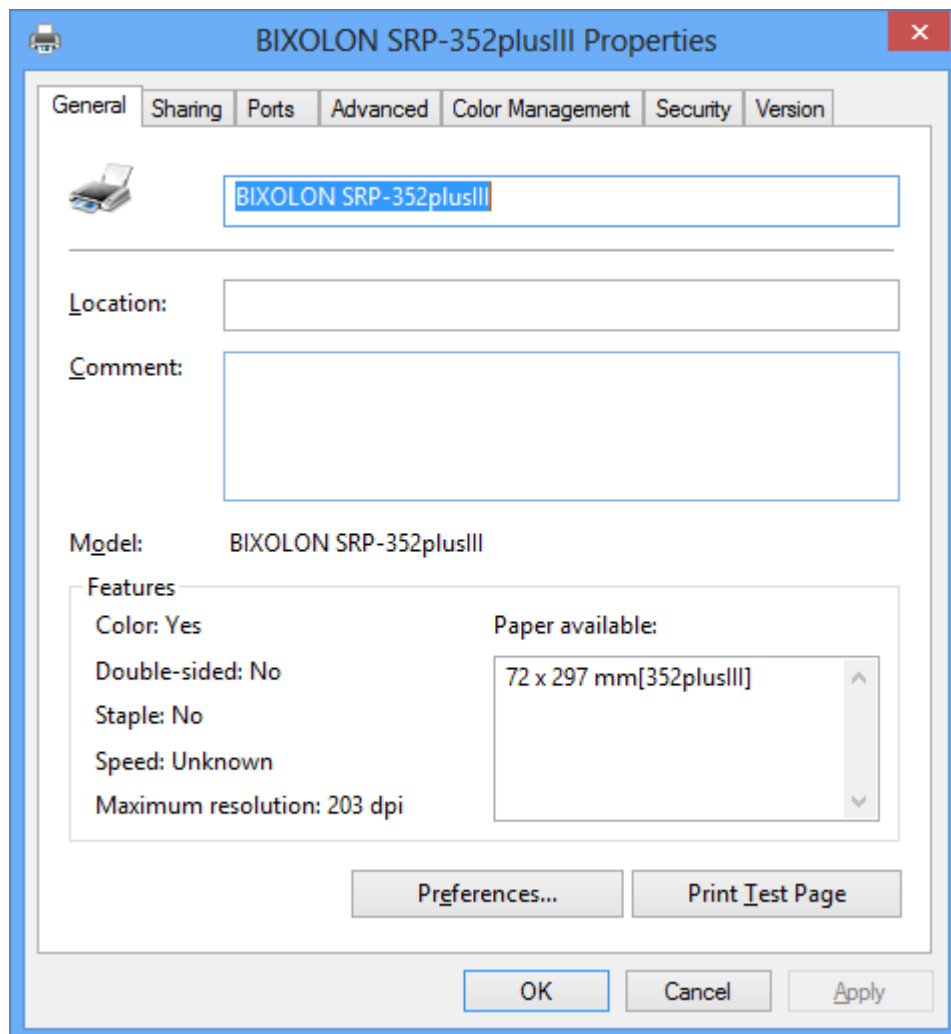


5) Turn off the printer and then turn it on. The printer driver will be installed automatically.

6) Open the printer properties window in the Windows OS.

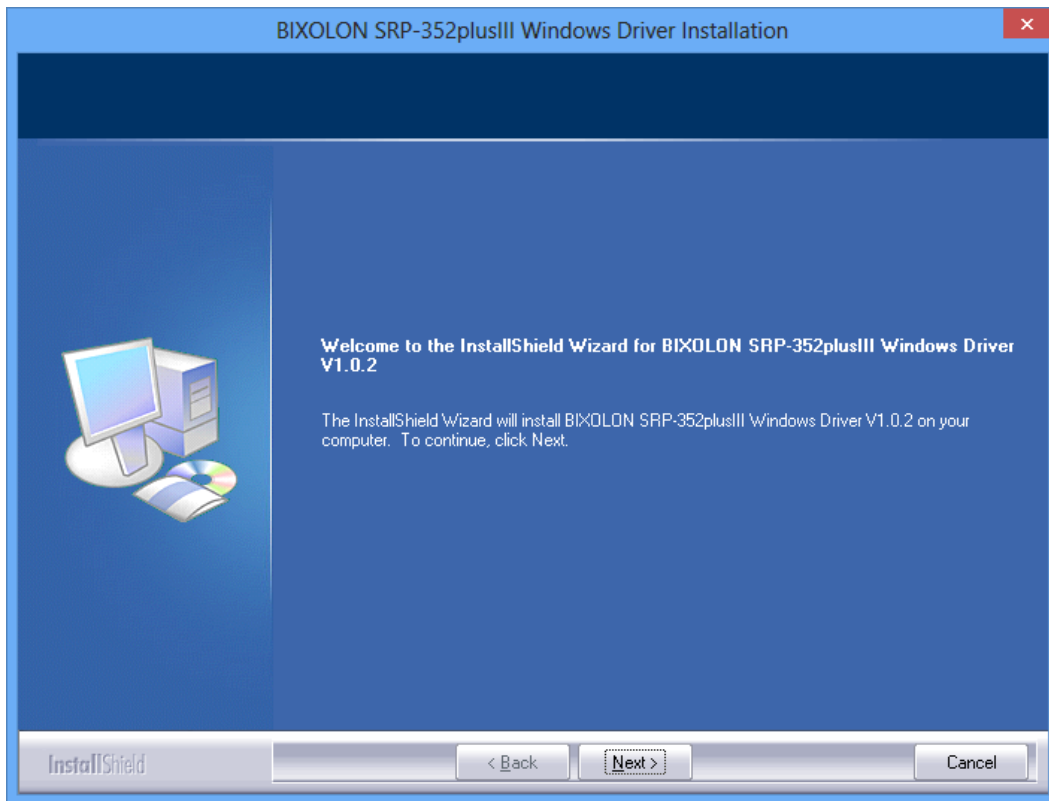
※ Control Panel – Hardware and Sound – Device and Printers.

7) Click “Print Test Page” and check printing status. Proper installation of the driver is indicated if the test page is printed normally.

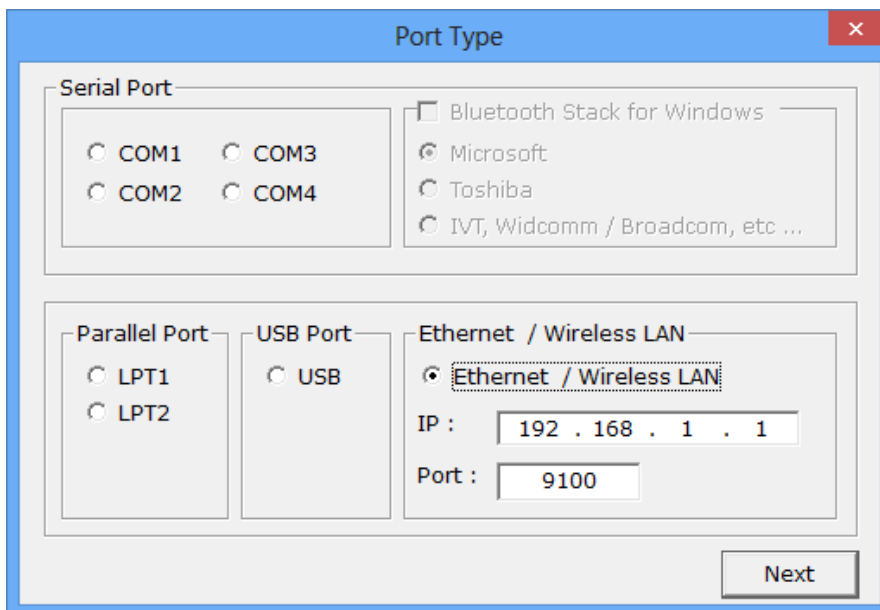


4-2-4 Via Ethernet / Wireless LAN Port

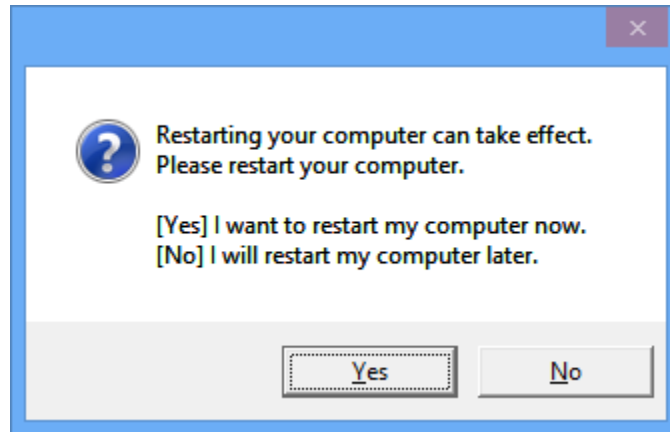
- 1) Double-click the Windows Driver installation file.
- 2) Click “Next”.



- 3) Select “Ethernet / Wireless LAN”.
- 4) Enter the IP address and port number, and then click “Next”.



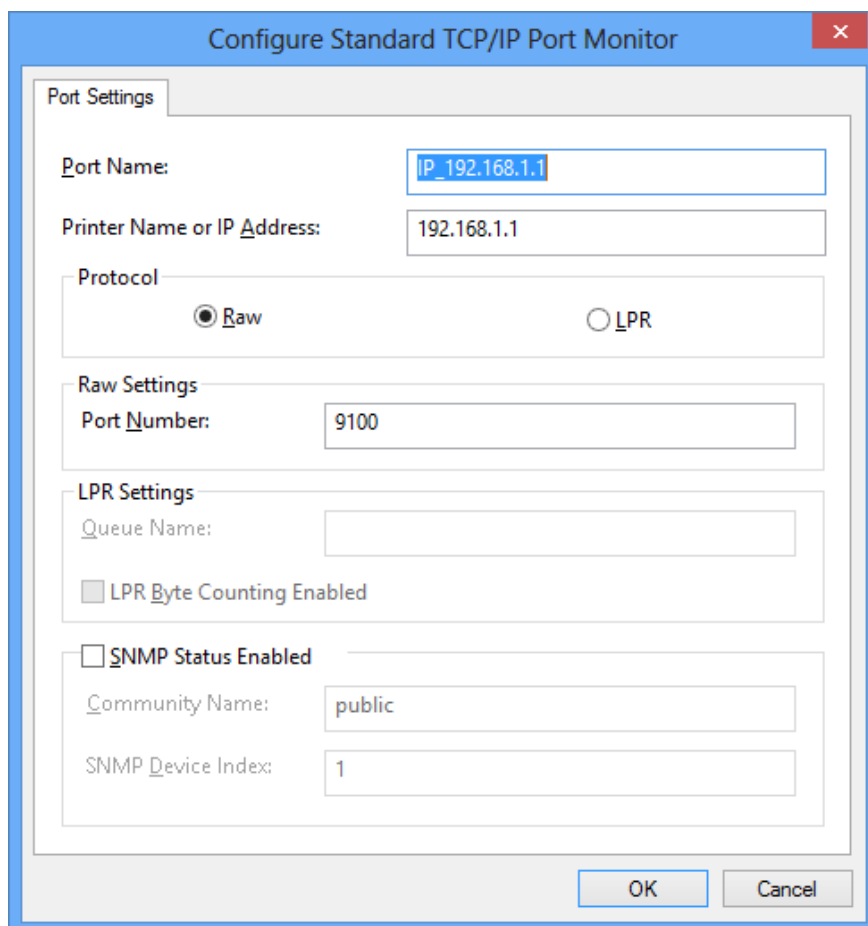
5) Click “Yes” to reboot the PC.



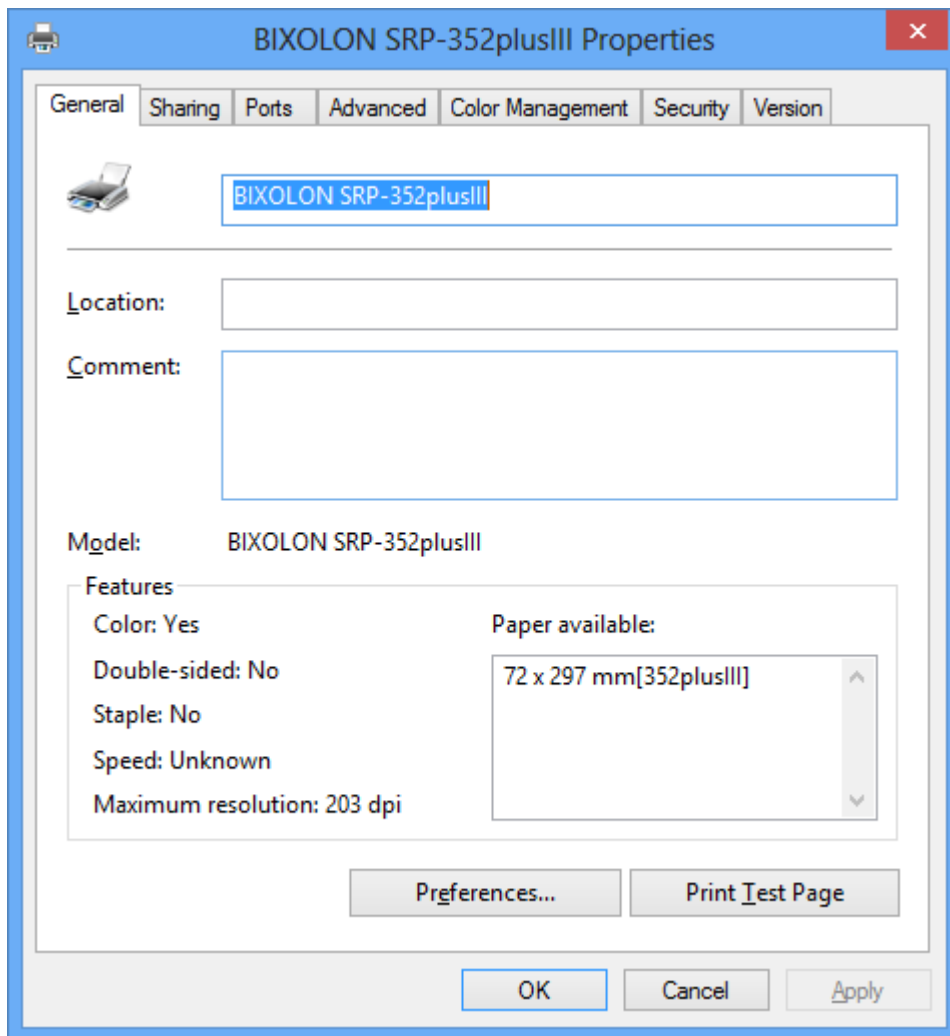
6) Open the printer properties window in the Windows OS.
※ Control Panel – Hardware and Sound – Device and Printers.

7) In the Ports tab, click “Configure Port...”

8) Match the communication settings to those of the printer.



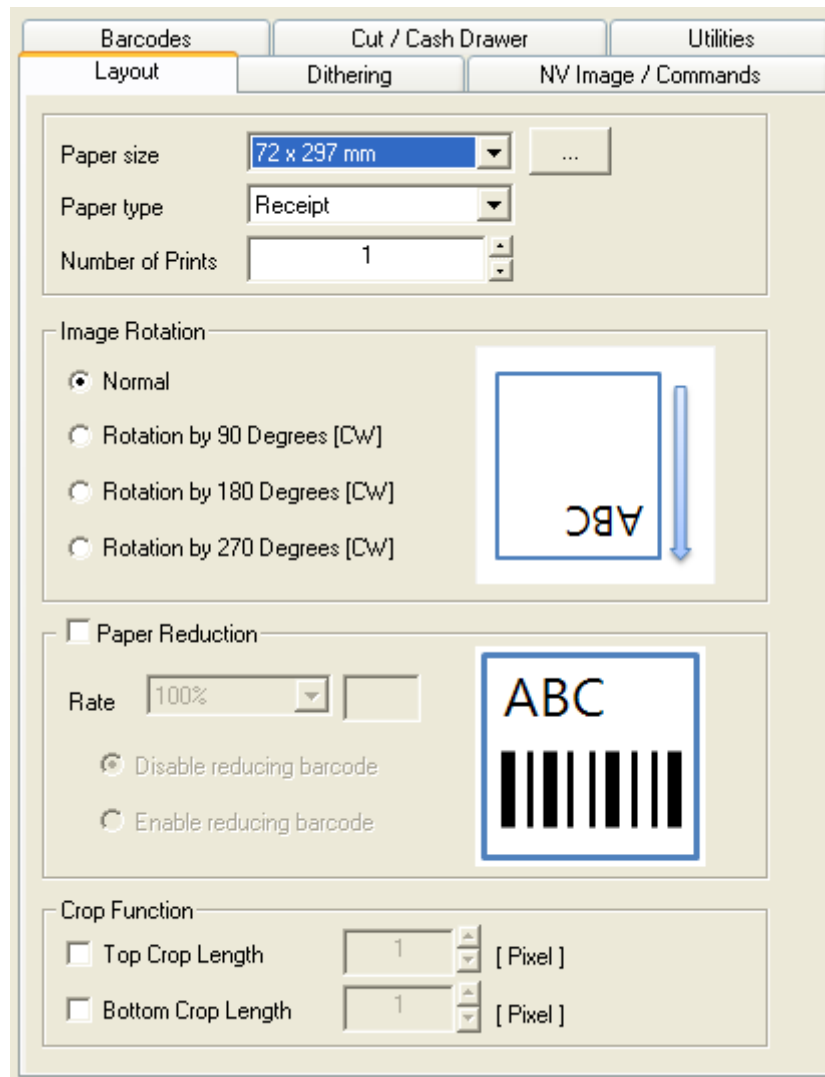
9) Click “Print Test Page” and check printing status. Proper installation of the driver is indicated if the test page is printed normally.



5. Detailed settings of Windows driver

The following detailed functions can be configured after installing the Windows driver.

5-1 Layout



- 1) Open the Printer Properties window for the corresponding OS.
- 2) Click the “Preferences” button in the “General” tab.
- 3) Click “Layout”.

5-1-1 Number of Prints

The Number of Prints is set to 1 by default. Set this value bigger than 1 to set the number of copies to print. The value should be within the range of 1 to 100.

5-1-2 Paper Type

You can choose Receipt or Ticket as paper types. Receipt allows flexible paper length according to the data length. Ticket print in fixed length even the print data is short. Default setting is “Receipt”.

- Receipt : Receipt allows flexible paper length according to the data length.
 Ticket : Ticket print in fixed length even the print data is short.

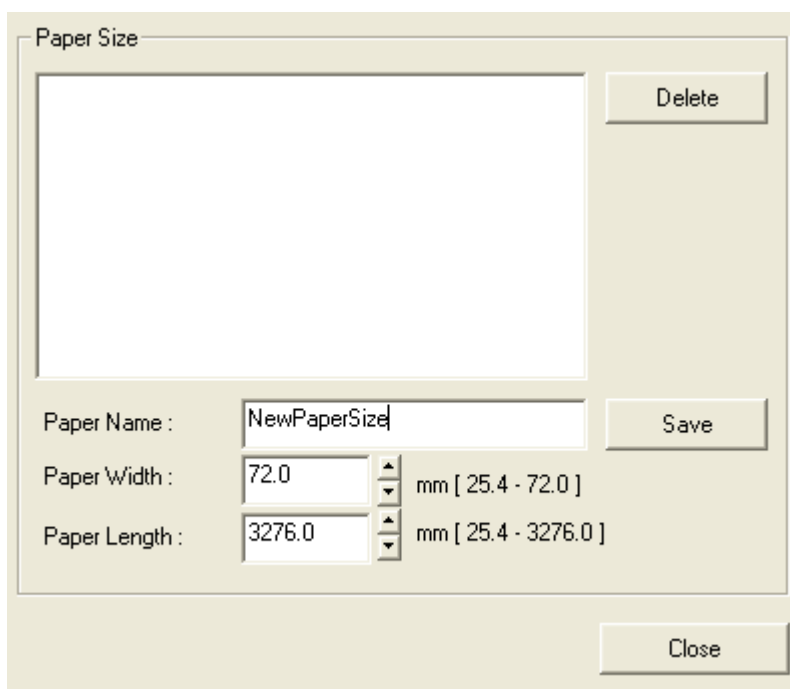
5-1-3 Paper Size

Paper size of 72 x 297 mm is selected by default, and the following sizes can be selected.

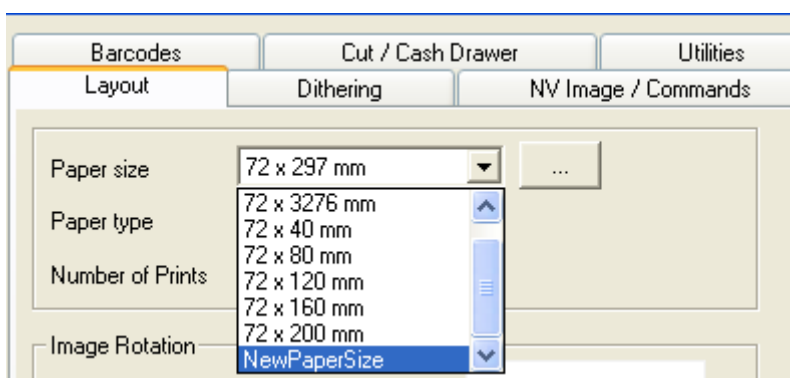
72 × 40 mm	72 × 160 mm	72 × 3276 mm
72 × 80 mm	72 × 200 mm	
72 × 120 mm	72 × 297 mm	

If a custom paper size is required, click the “...” button to add or update a custom paper size and then, click the “Save” button after specifying the paper width/length and a paper name. If the specified paper name already exists on the system, you can update the paper width/length.

- Valid Paper Width : 25.4 mm ~ 72 mm
- Valid Paper Length : 25.4 mm ~ 3276 mm



You can choose the new paper size on the “Paper Size” combo-box after adding a paper size.



5-1-4 Image Rotation

The image can be rotated 90°, 180°, and 270° in a clockwise direction for printing. When the rotation function is used for printing, device font is converted to True Type Font.

5-1-5 Paper Reduction

This function reduces the print image size down to 25% to save print paper. When the reduction function is used, device font is converted to True Type font for printing.

If the barcode font also needs to be reduced, select the Enable reducing barcode button. Select Disable reducing barcode button if it is not required.

5-1-6 Crop Function

This function crops the upper and lower end of the printing area by the specified number of pixels. It helps reduce the margin at the top and bottom when there is excessive margin. The value should be within the range of 1 to 255 [pixel].

5-2 Dithering



- 1) Open the Printer Properties window for the corresponding OS.
- 2) Click the "Preferences" button in the "General" tab.
- 3) Click "Dithering".

This printer model is a black and white printing device including dithering function, graphic processing, grayscale print function, and brightness level adjust function to produce a sharper or softer image. The following dithering algorithm option is available when Monochrome option is selected.

- None
- Error Diffusion
- Ordered Dither
- 4x4 Matrix
- 8x8 Matrix

Dithering algorithm is not available if Grayscale option is selected, and print speed may become slower because the amount of data to send to the printer becomes larger.

5-3 NV Image/Commands

Text & Command [Example : <1B700019FF> or <1B>p<0019FF>]

Start Doc
 NV Image Printing : Not Printed
 Text & Command

Start Page
 NV Image Printing : Not Printed
 Text & Command

End Page
 NV Image Printing : Not Printed
 Text & Command

End Doc
 NV Image Printing : Not Printed
 Text & Command

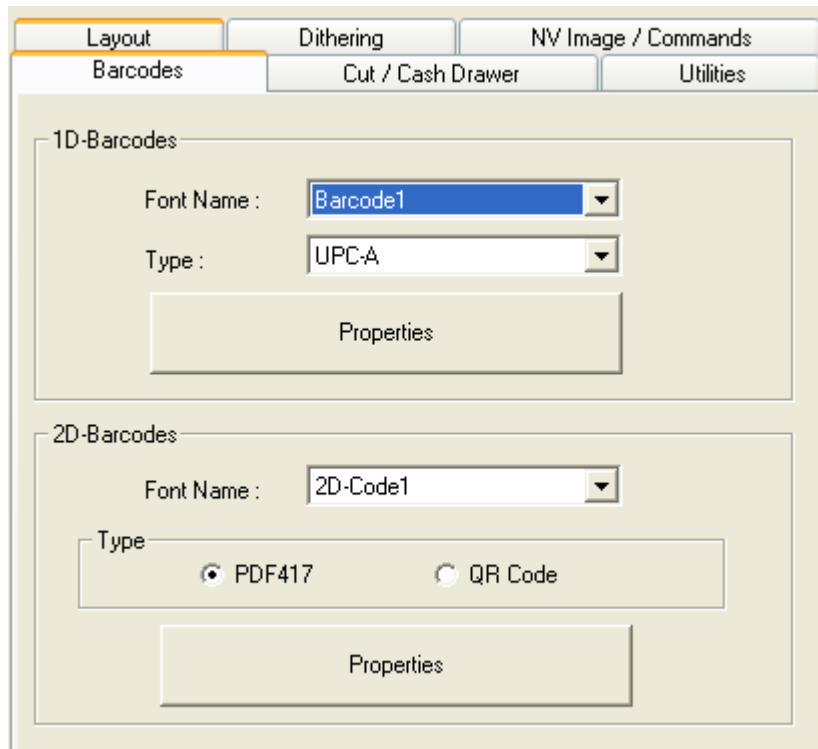
NV Function Options
 NV bit image NV graphics

- 1) Open the Printer Properties window for the corresponding OS.
- 2) Click the "Preferences" button in the "General" tab.
- 3) Click "NV Image / Commands".

NV image downloaded and stored in the printer can be inserted at the beginning and/or end of the document and beginning and end of each page, or printer command can be inserted before sending printer data to the printer. NV image can be downloaded using the Unified POS Utility.

- Start Doc : Insert commands or NV image at the top of the document.
- Start Page : Insert commands or NV image at the top of the page.
- End Page : Insert commands or NV image at the end of the page.
- End Doc : Insert commands or NV image at the end of the document.

5-4 Barcodes



- 1) Open the Printer Properties window for the corresponding OS.
- 2) Click the “Preferences” button in the “General” tab.
- 3) Click “Barcodes”.

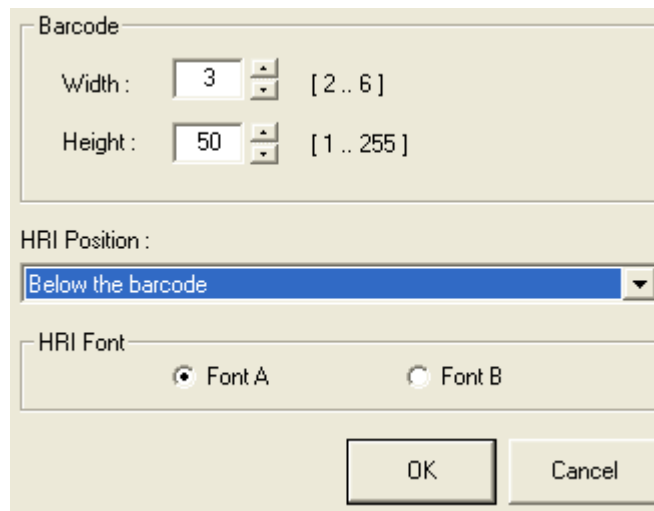
5-4-1 1d Barcodes

Windows driver supports one-dimensional barcode type as shown in the following table. Set the one-dimensional barcode type supported by the Windows driver in the “Barcode Font Name” field to print the bar code.

Barcode Font Name	Barcode Type	Size (Point)	Supported Characters
Barcode1	UPC-A	18/35.5/53/71	Numeric: 0~9
Barcode2	UPC-E	18/35.5/53/71	Numeric: 0~9
Barcode3	JAN13(EAN)	18/35.5/53/71	Numeric: 0~9
Barcode4	JAN8(EAN)	18/35.5/53/71	Numeric: 0~9
Barcode5	Code39	18/35.5/53/71	Numeric: 0~9 Symbols: \$, +, -, ., / Letters: A~Z
Barcode6	ITF	18/35.5/53/71	Numeric: 0~9
Barcode7	Codabar	18/35.5/53/71	Numeric : 0~9 Symbols: \$, +, -, ., /, : Letters: A~D
Barcode8	Code93	18/35.5/53/71	ASCII CODE: 0~127
Barcode9	Code128	18/35.5/53/71	ASCII CODE: 0~127

Detailed settings for one-dimensional barcode

Select “Barcode Font Name” and “Barcode Type” of one-dimensional barcode and click the “Properties” button.



The image shows a dialog box titled "Barcode" with the following settings:

- Width:** A numeric input field containing "3" with a range indicator "[2 .. 6]".
- Height:** A numeric input field containing "50" with a range indicator "[1 .. 255]".
- HRI Position:** A dropdown menu currently displaying "Below the barcode".
- HRI Font:** Two radio buttons labeled "Font A" (which is selected) and "Font B".

At the bottom right of the dialog are "OK" and "Cancel" buttons.

This width, height, and HRI (Human Readable Interpretation), print position, and HRI Font of the bar code can be programmed from this window.

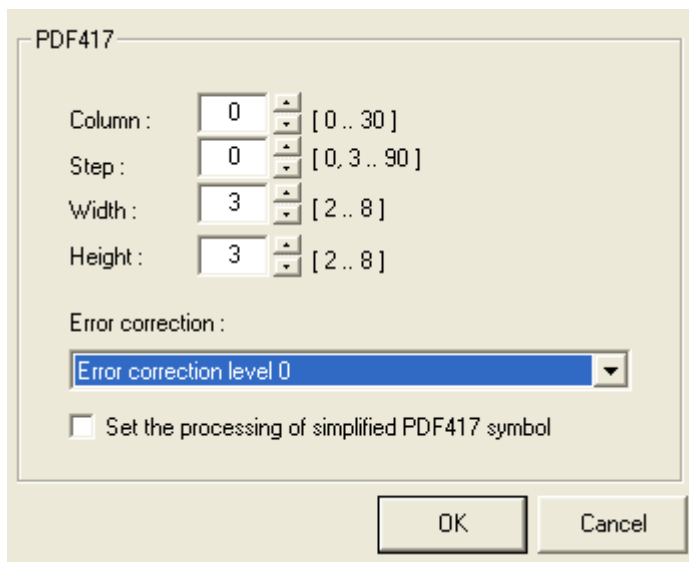
5-4-2 2d Barcodes

Windows driver supports two-dimensional barcode type as shown in the following table. Set the two-dimensional barcode type supported by the Windows driver in the “Barcode Font Name” field to print the barcode.

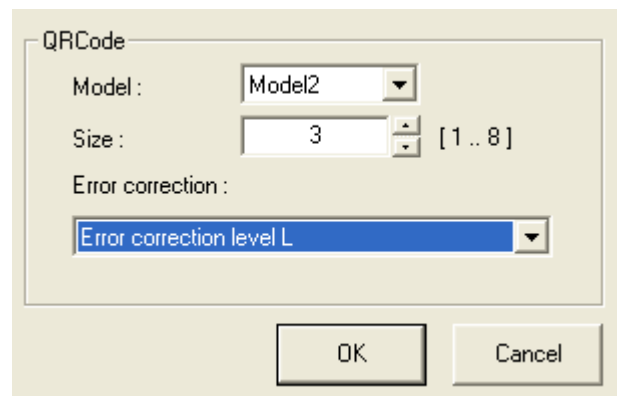
Barcode Font Name	Barcode Type	Size (Point)
2D-Code1	PDF417	8.5
2D-Code2	QR Code	8.5

Detailed settings for two-dimensional barcode

Select “Barcode Font Name” and “Barcode Type” of one-dimensional barcode and click the “Properties” button. Various options such as width, height, size, and error compensation level can be configured depending on the type of two-dimensional barcode from this window as shown in the following picture.

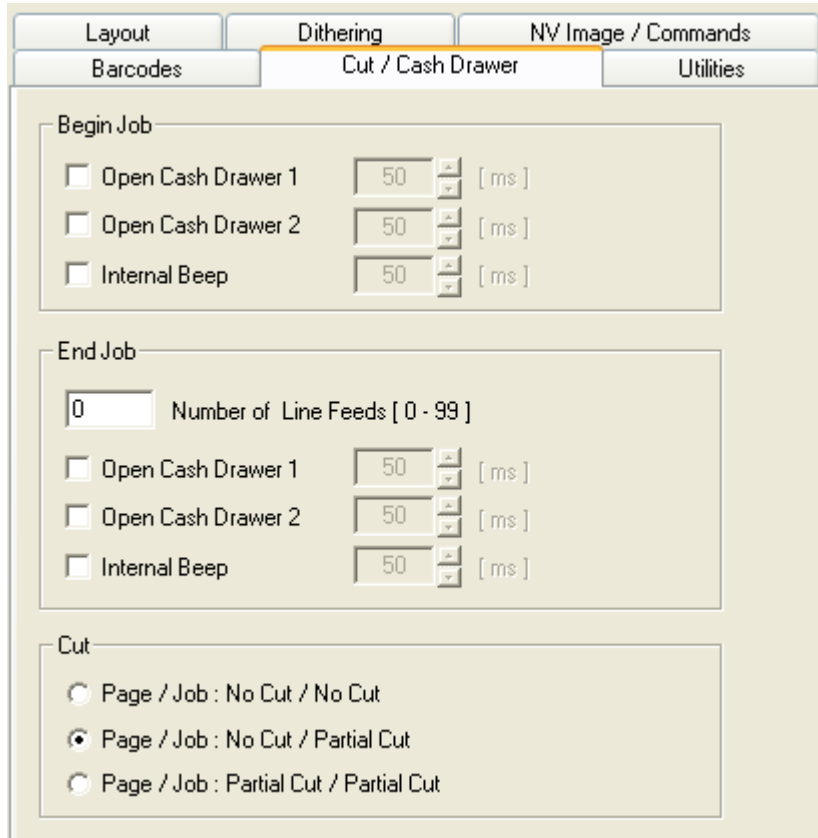


<PDF417>



<QR Code>

5-5 Cut / Cash Drawer

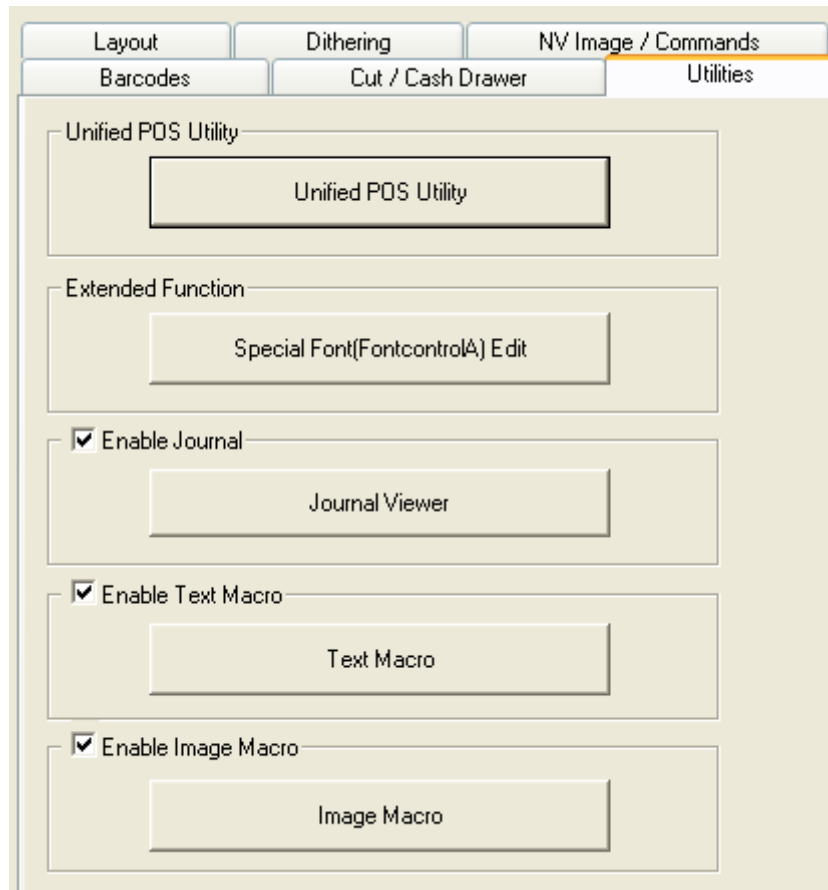


- 1) Open the Printer Properties window for the corresponding OS.
- 2) Click the “Preferences” button in the “General” tab.
- 3) Click “Cut / Cash Drawer”.

Various functions including Open Cash Drawer, Internal Beep, and Line Feeds can be inserted at the beginning or end of the document from this tab. Paper can be cut at the end of each page or each document.

- | | | |
|--------------------------------------|---|---|
| Page/Job : No Cut / No Cut | : | Paper is not cut after printing. |
| Page/Job : No Cut / Partial Cut | : | Paper is cut at the end of each document (Job). |
| Page/Job : Partial Cut / Partial Cut | : | Paper is cut at the end of each page. |

5-6 Utilities



- 1) Open the Printer Properties window for the corresponding OS.
- 2) Click the "Preferences" button in the "General" tab.
- 3) Click "Utilities".

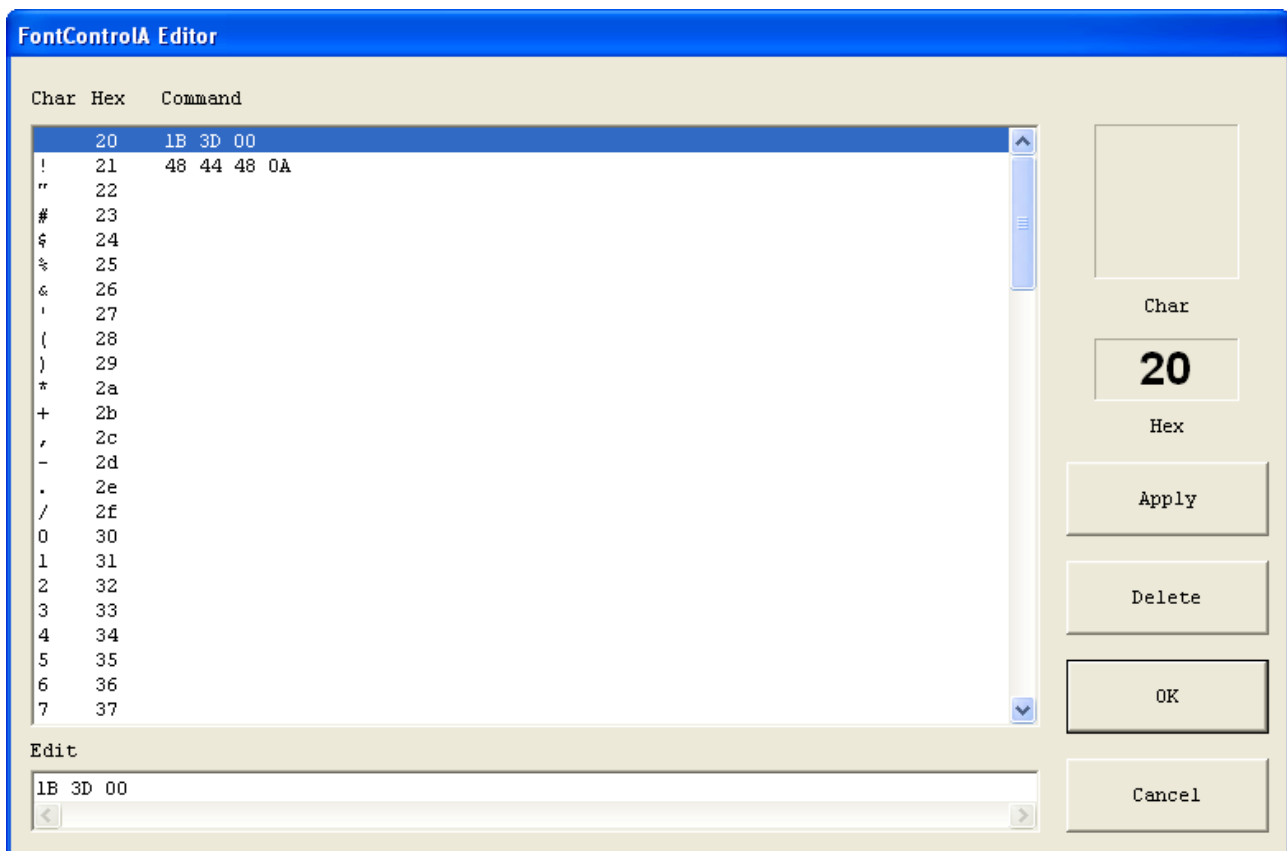
5-6-1 Unified POS Utility

Refer to the Unified POS Utility manual contained in the CD for details.

5-6-2 Special Font Edit Utility

The purpose of the “FontControlA” font is not for text printing. It is used to define the printer command, assign the defined printer command to a specific ASCII character, and send it to the printer. The range of ASCII code that the command can be assigned is from 0x20 to 0x7F, and the command can be easily assigned using this utility.

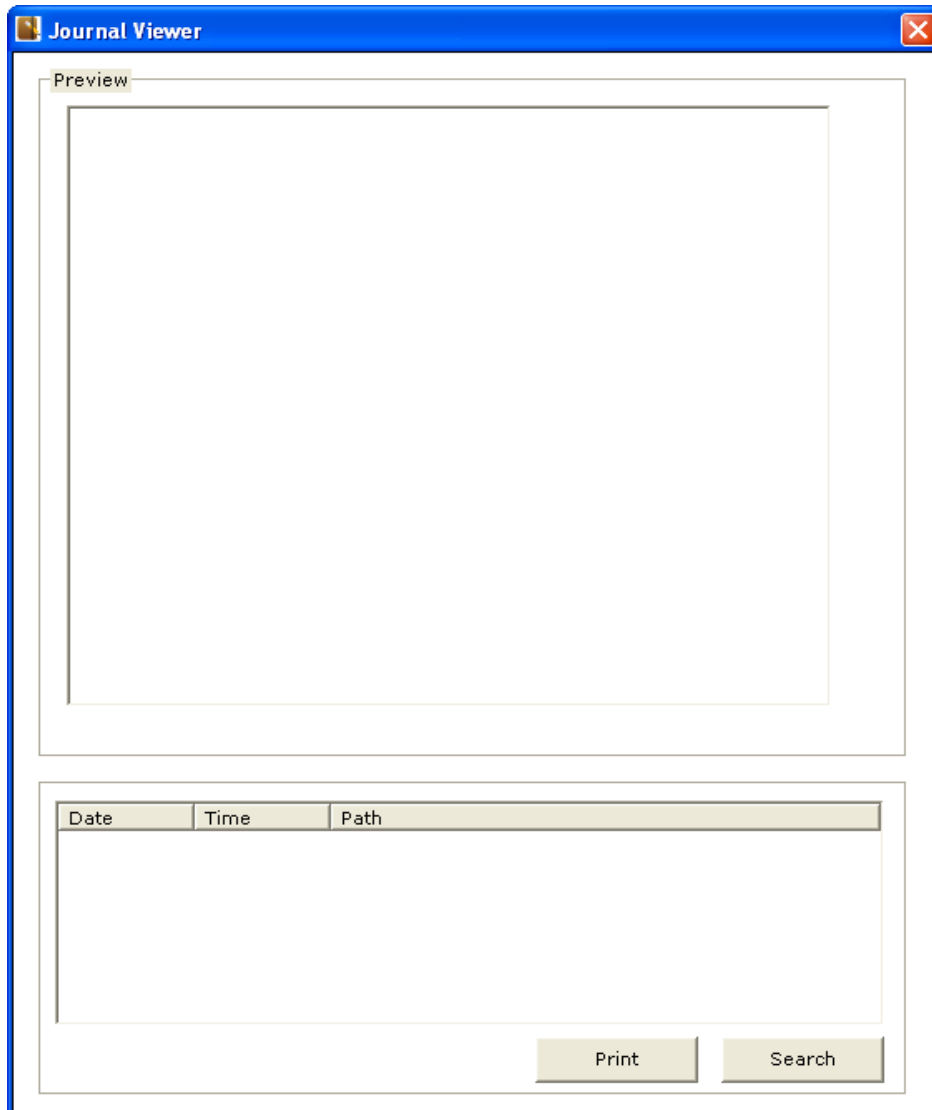
- 1) Click “Special Font Edit Utility”.
- 2) Select an ASCII code character and enter the printer command. All values should be entered in hexadecimal number format.
- 3) Click “Apply” and then click “OK”.



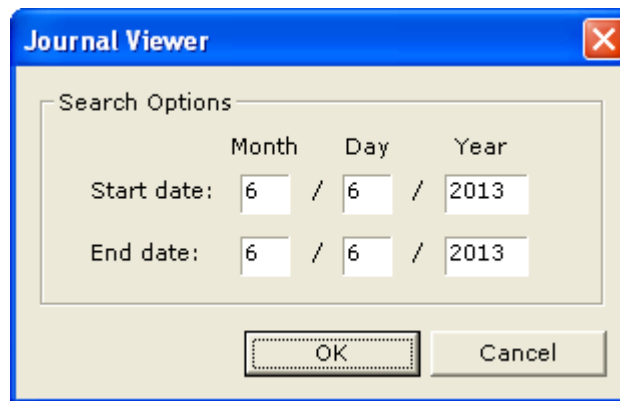
5-6-3 Journal Viewer

Journal is a function to save a copy of printed receipts. Copies can be saved without using journal printer with this function. Journal saves each printed document in a file and the saved file can be viewed by print and search data using this utility.

- 1) Tick “Enable Journal” to use Journal function.
- 2) Click “Journal Viewer”.
- 3) The following window will pop up.



- 4) Click “Search” and set “Start Date” and “End Date”.
- 5) Click “OK” to search the files created within the specified period.

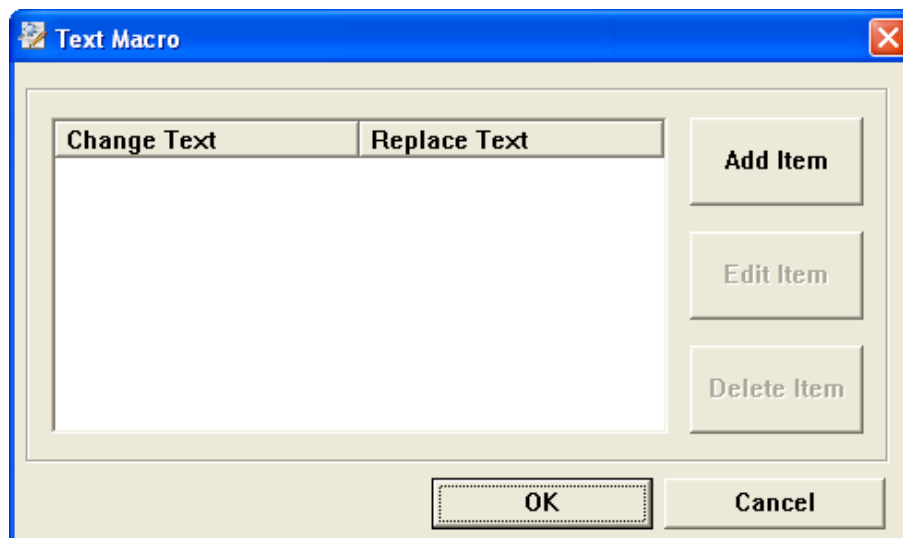


6) Select the file to print from the list and click “Print” to print the data stored in the file.

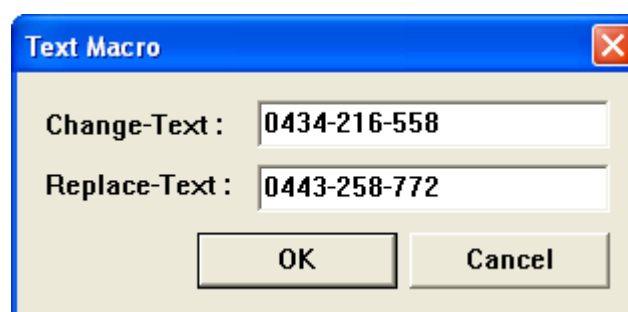
5-6-4 Text Macro

Text Macro is a utility to replace specific text with other text for printing. This function can be used only when using Device Fonts and it has no effect when using True Type Fonts. Detailed instructions are shown below.

1) Tick “Enable Text Macro” and click the “Text Macro” button.



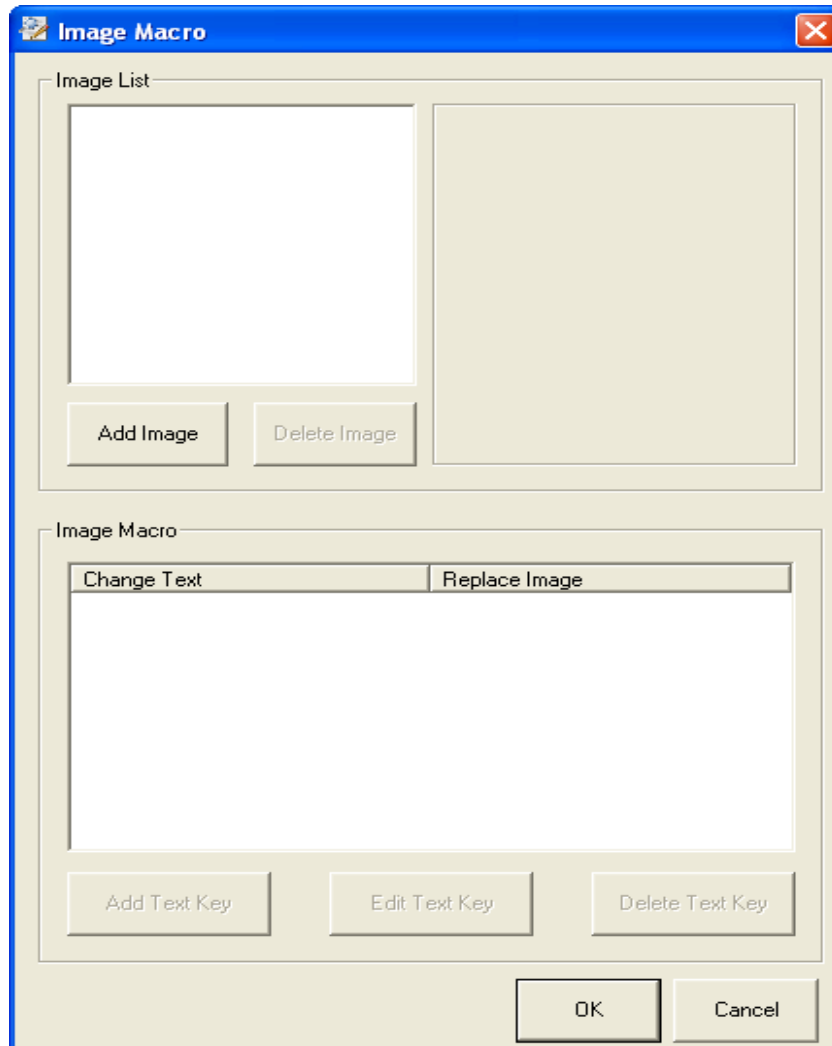
2) Click “Add Item”, enter the text to change in the “Change-Text” field, enter the text to place within the “Replace Text” field, and click “OK”.



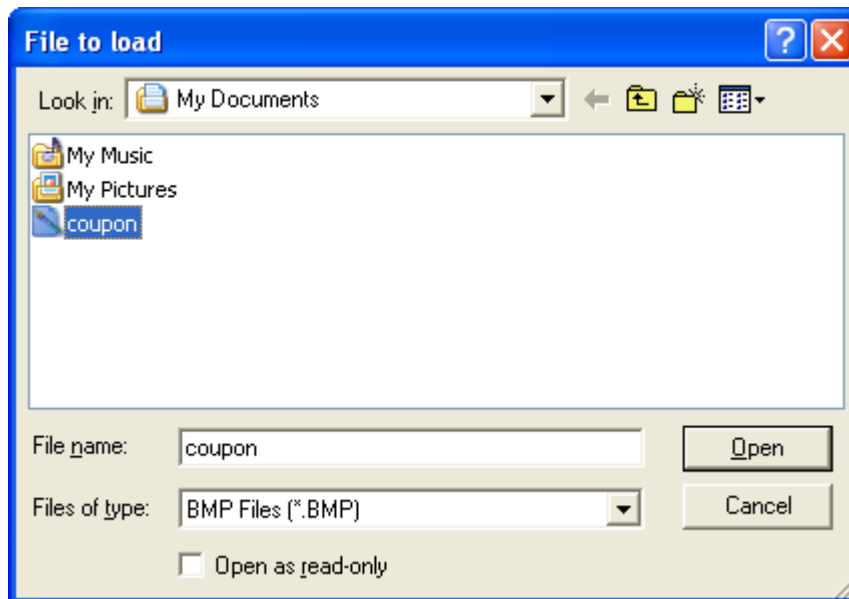
5-6-5 Image Macro

Image Macro is a utility to support the function that replaces certain text with a specified image for printing. This function is applicable only when using Device Fonts and it has no effect when using TrueType Fonts. Detailed instructions are shown below.

1) Tick “Enable Image Macro”, and click the Image Macro button.



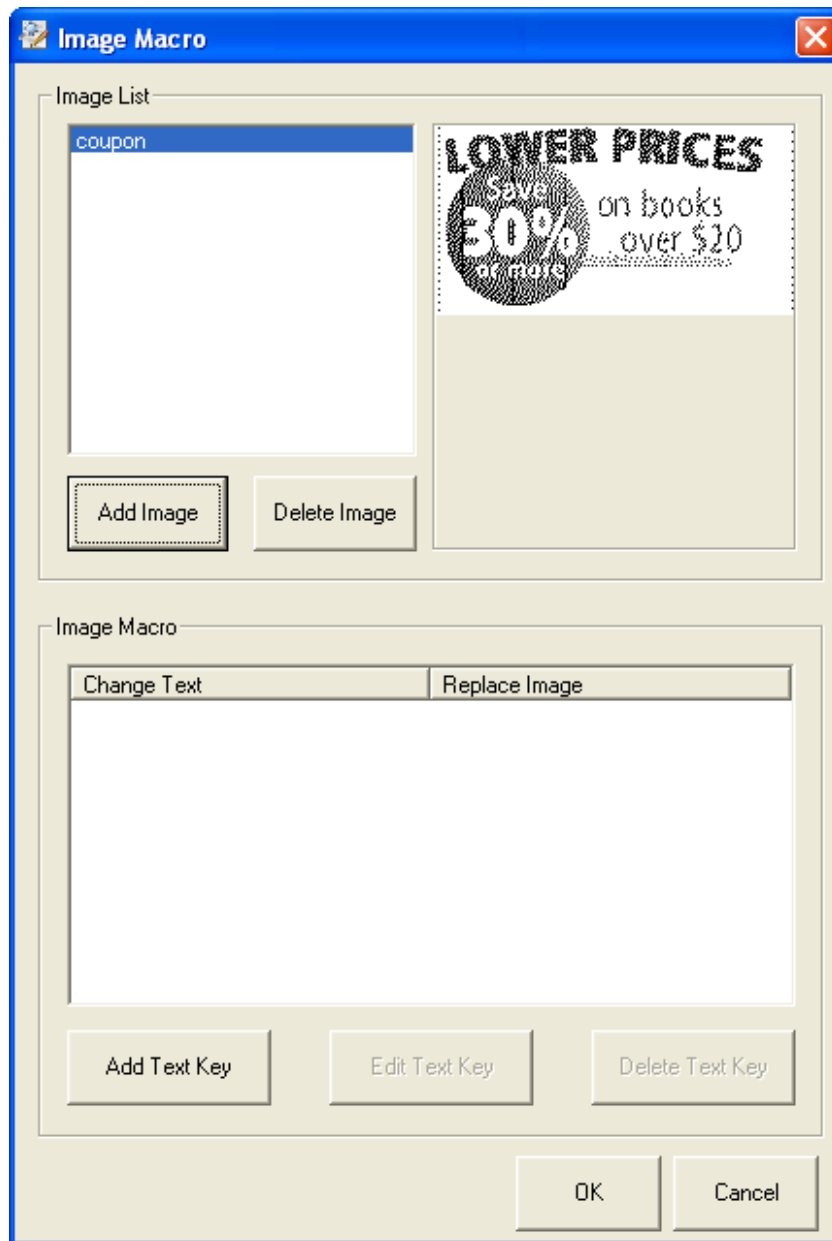
2) Click “Add Image”, select a bitmap file (*.bmp), and click “Open”.



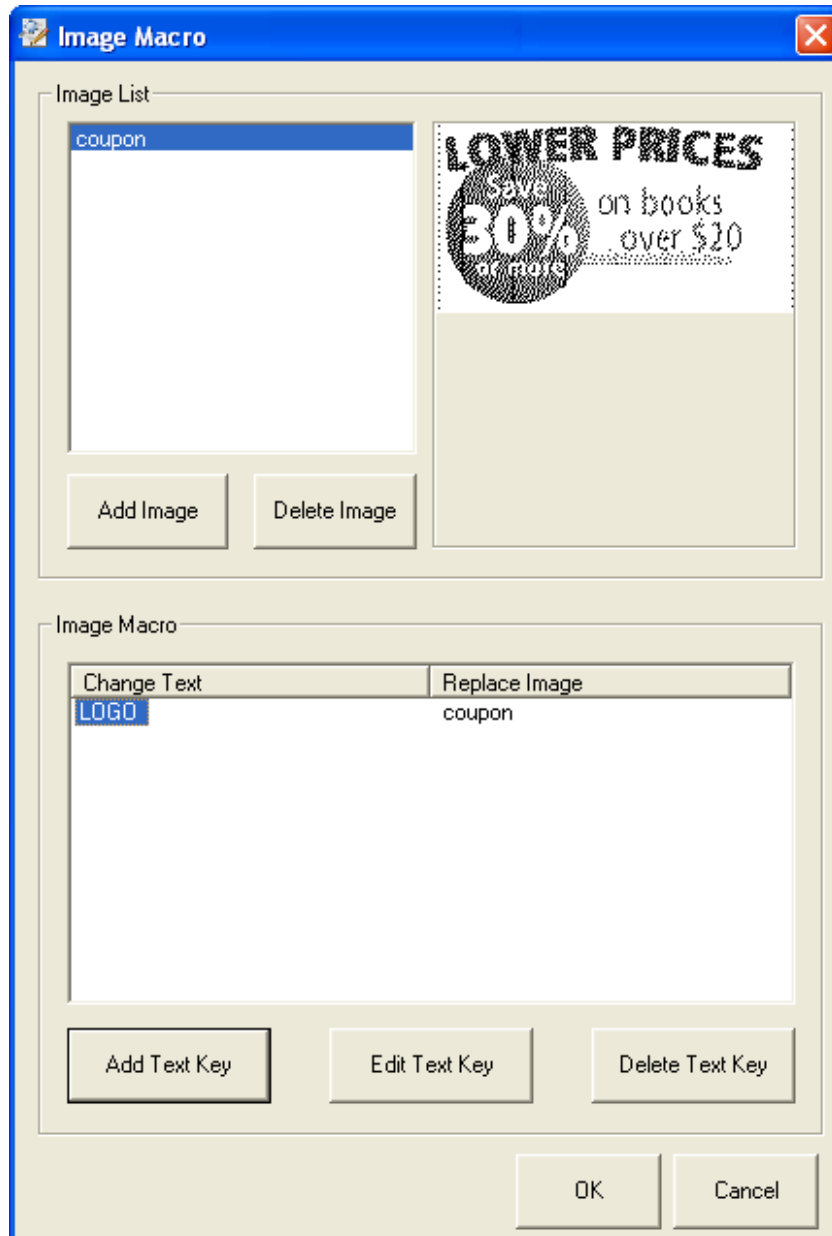
3) Provide the name to be added to the Image List, select a dithering type, and click “OK”.



- 4) Click “Add Text Key” and set the image to replace the text key. Enter the text in the “Change-Text” field and select the image to replace the corresponding text in the “Replace-Image”.



5) Click "OK".



6. Windows Driver Specifications

6-1 Fonts

This Windows driver supports various fonts in the following table. Printing using these fonts is faster than using Windows fonts provided by the operating system.

6-1-1 Standard Fonts

Printer font			Font size (dot)	Font Size (point)
FontA1x1	FontA1x1[Ext.]	FontA1x1[255]	12 x 24	8.5
FontA1x2	FontA1x2[Ext.]	FontA1x2[255]	12 x 48	17
FontA2x1	FontA2x1[Ext.]	FontA2x1[255]	24 x 24	8.5
FontA2x2	FontA2x2[Ext.]	FontA2x2[255]	24 x 48	17
FontA2x4	FontA2x4[Ext.]	FontA2x4[255]	24 x 96	34
FontA4x2	FontA4x2[Ext.]	FontA4x2[255]	48 x 48	17
FontA4x4	FontA4x4[Ext.]	FontA4x4[255]	48 x 96	34
FontA4x8	FontA4x8[Ext.]	FontA4x8[255]	48 x 192	68
FontA8x4	FontA8x4[Ext.]	FontA8x4[255]	96 x 96	34
FontA8x8	FontA8x8[Ext.]	FontA8x8[255]	96 x 192	68
FontB1x1	FontB1x1[Ext.]	FontB1x1[255]	9 x 17	6
FontB1x2	FontB1x2[Ext.]	FontB1x2[255]	9 x 34	12
FontB2x1	FontB2x1[Ext.]	FontB2x1[255]	18 x 17	6
FontB2x2	FontB2x2[Ext.]	FontB2x2[255]	18 x 34	12
FontB2x4	FontB2x4[Ext.]	FontB2x4[255]	18 x 68	24
FontB4x2	FontB4x2[Ext.]	FontB4x2[255]	36 x 34	12
FontB4x4	FontB4x4[Ext.]	FontB4x4[255]	36 x 68	24
FontB4x8	FontB4x8[Ext.]	FontB4x8[255]	36 x 136	48.5
FontB8x4	FontB8x4[Ext.]	FontB8x4[255]	72 x 68	24
FontB8x8	FontB8x8[Ext.]	FontB8x8[255]	72 x 136	48.5
FontC1x1	FontC1x1 [Ext.]	FontC1x1 [255]	9 x 24	8.5
FontC1x2	FontC1x2 [Ext.]	FontC1x2 [255]	9 x 48	17
FontC2x1	FontC2x1 [Ext.]	FontC2x1 [255]	18 x 24	8.5
FontC2x2	FontC2x2 [Ext.]	FontC2x2 [255]	18 x 48	17
FontC2x4	FontC2x4 [Ext.]	FontC2x4 [255]	18 x 96	34
FontC4x2	FontC4x2 [Ext.]	FontC4x2 [255]	36 x 48	17
FontC4x4	FontC4x4 [Ext.]	FontC4x4 [255]	36 x 96	34
FontC4x8	FontC4x8 [Ext.]	FontC4x8 [255]	36 x 192	68
FontC8x4	FontC8x4 [Ext.]	FontC8x4 [255]	72 x 96	34
FontC8x8	FontC8x8 [Ext.]	FontC8x8 [255]	72 x 192	68

6-1-2 Meaning of names of Device fonts.

1) FontA1x2

- ANSI Character code support (Code page 16: 1252)
- Font size (dot): 12 x 48 (Double height)
- Point size: 17

2) FontA1x2 [Ext]

- IBM expansion Character code support (Code page 0: 437)
- Font size (dot): 12 x 48 (Double height)
- Point size: 17

3) FontA1x2 [255]

- BUYER ONLY code support (Code page 255)
- Font size (dot): 12 x 48 (Double height)
- Point size: 17

6-2 “FontControl” Font

This Windows driver supports the special functions as shown in the following table. Select the “FontControl” character first and use the characters in the table to use the special functions. Take care as this function is not for printing general texts.

Character	Special Functions
5	Print HT (0 x 09)
6	Print LF (0 x 0A)
7	Print CR (0 x 0D)
a	Open Drawer 2 (50ms driver pulse width)
b	Open Drawer 2 (100ms driver pulse width)
c	Open Drawer 2 (150ms driver pulse width)
d	Open Drawer 2 (200ms driver pulse width)
e	Open Drawer 2 (250ms driver pulse width)
f	Open Drawer 2 without paper feeding (50ms driver pulse width)
g	Cut without paper feeding
i	Print double size color image stored in the address 00
j	Print double size color image stored in the address 01
k	Print double size color image stored in the address 02
l	Print double size color image stored in the address 03
m	Print double size color image stored in the address 04
p	Do not add HRI characters to barcode
q	Add HRI characters above the bard code with FontA
r	Add HRI characters below the bard code with FontA
s	Add HRI characters above the bard code with FontB
t	Add HRI characters below the bard code with FontB
w	Align text to the left
x	Align text to the center
y	Align text to the right
A	Open Drawer 1 (50ms driver pulse width)
B	Open Drawer 1 (100ms driver pulse width)
C	Open Drawer 1 (150ms driver pulse width)
D	Open Drawer 1 (200ms driver pulse width)
E	Open Drawer 1 (250ms driver pulse width)
F	Open Drawer 1 without paper feeding (50ms driver pulse width)
G	Print NV bitmap image 1
H	Print NV bitmap image 2
I	Print NV bitmap image 3
J	Print NV bitmap image 4
K	Print NV bitmap image 5
P	Cut (partial cut)
R	Print the NV Graphics stored in the address 00
S	Print the NV Graphics stored in the address 01
T	Print the NV Graphics stored in the address 02

Character	Special Functions
U	Print the NV Graphics stored in the address 03
V	Print the NV Graphics stored in the address 04
[Print double size NV bitmap image 1
]	Print double size NV bitmap image 2
^	Print double size NV bitmap image 3
_	Print double size NV bitmap image 4
`	Print double size NV bitmap image 5

1) Example : Select “FontControl” font and send 6 for “LF” (Line Feed) operation (instead of printing character “6”).

2) “FontControl” character function

Printer font special function	Function	Point size (point/dot)
FontControl	Open Drawer 1 /2 Cut receipt Cut receipt (without paper feeding) Align (left/center/right) Print HT, LF, CR Print barcode Print NV bitmap image	(8.5 / 12x24)

7. Windows Driver Application

7-1 Application with Visual Basic

This section contains example codes to control the printer (BIXOLON SRP-352plusIII) using Windows driver with Visual Basic. Sample codes contained in the CD.

7-1-1 Windows driver selection

The following example code explains how to select the “BIXOLON SRP-352plusIII” Windows driver.

```
For Each prnPrinter In Printers
    If prnPrinter.DeviceName = “BIXOLON SRP-352plusIII” Then
        Set Printer = prnPrinter
    Exit For
End If
Next
```

7-1-2 Text Printing

The following example code explains how to print texts using Windows Fonts and Device Fonts.

```
‘Print in Windows font
Printer.FontSize = 9
Printer.FontName = “Arial”
Printer.Print “Arial Test”

‘Print in printer font
Printer.FontSize = 8.5
Printer.FontName = “FontA1x1”
Printer.Print “FontA1x1 Test”

Printer.EndDoc
```

7-1-3 Barcode Printing

The following example code explains how to print the barcode (JAN8 (EAN)).

```
'Print Bar Code.  
Printer.FontSize = 18  
  
Printer.FontName = "Barcode4"  
Printer.Print "1234567"  
  
Printer.EndDoc
```

The following example code explains how to print the 2-D barcode (PDF417).

```
'Print Two-dimensional Codes.  
Printer.FontSize = 8.5  
  
Printer.FontName = "2D-Code1"  
Printer.Print "Print Test PDF417"  
  
Printer.EndDoc
```

7-2 Application with WordPad

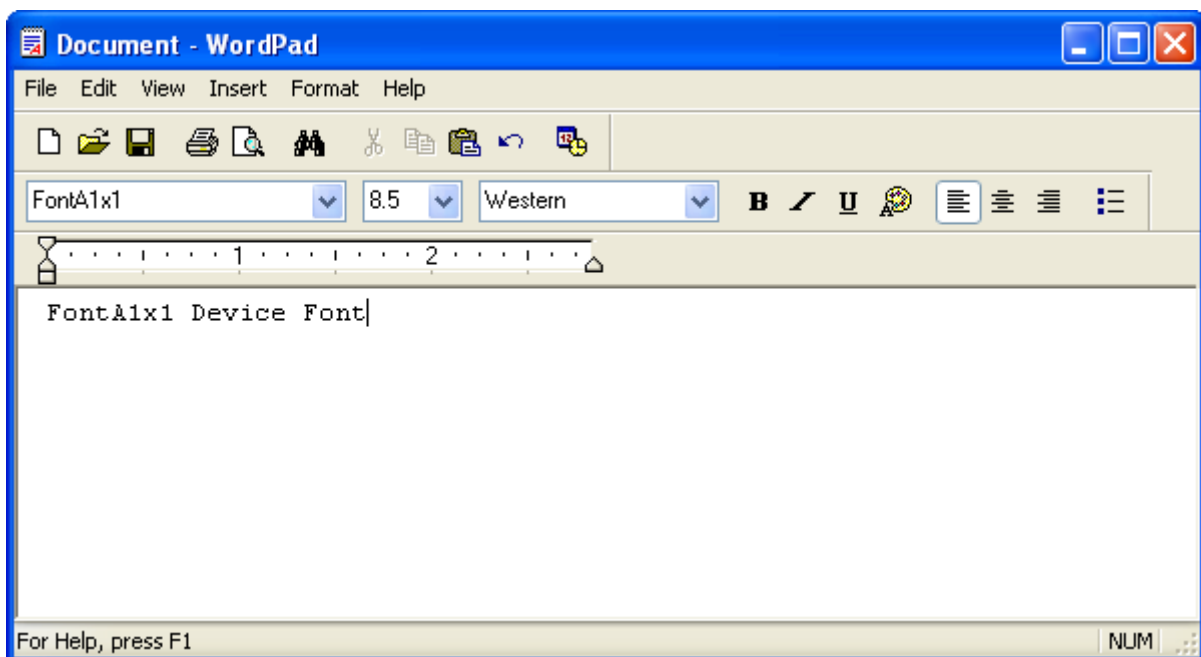
7-2-1 WordPad environment setting

Launch WordPad, set the printing related options as follows, and test the printer with WordPad.

- Select printer
Select "Print" from the "File" menu, and select the printer (BIXOLON SRP-352plusIII).
- Set paper size, orientation, margin, etc.
Select the "Page Setting" from "File" menu, and set paper size, orientation, and margin.

7-2-2 Text Printing

Print the text from WordPad using the Windows driver of the printer.



- 1) Select the font from the font selection box (FontA1x1).
- 2) Select the point size from the point selection box (8.5).
- 3) Enter the text to print.
- 4) Click the Print icon in the toolbar to print the text.